



Running TEMPO on DMAP SageMaker

Barron H. Henderson, Jeff Willison, Fahim Sidi

2023-09-13

Disclaimer: The views expressed in this presentation are those of the authors and do not necessarily reflect the views or policies of the U.S. Environmental Protection Agency.



Instructions

- Four slides of numbered instructions
- Summary:
- go to Data Science and start SageMaker
 - Open notebook
 - Set options
 - Run code and review notes
 - Repeat
- If something isn't working go to a break out room

1. Instructions numbered in green boxes.

Notes in grey.

Draws attention

Lots of pictures!

How to start DMAP Sage Maker

1) Go to DMAP (and wait)

work.epa.gov/data-science/dmap-portal

work.epa.gov/data-science/dmap-portal

DataCommons

An S3-based data storage environment. File bucket options coming in Fall 2023.

[Register](#)



SageMaker

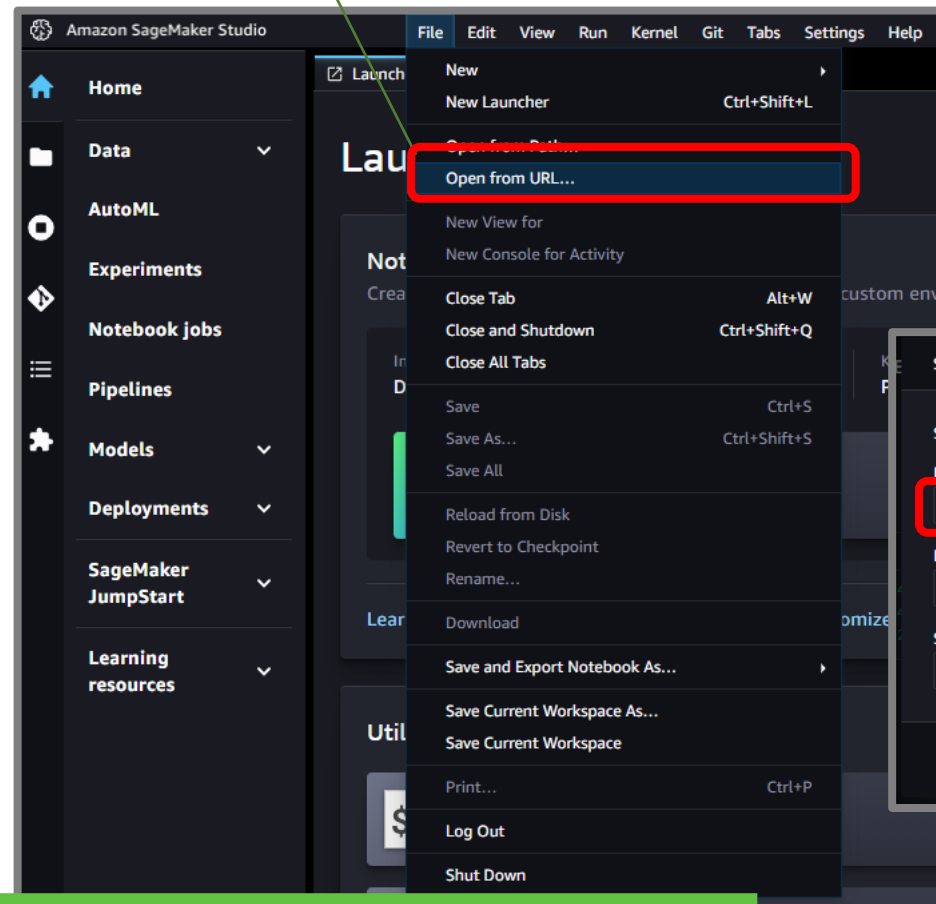
Create, train, and deploy machine-learning models in the cloud, or deploy ML models embedded systems and edge-devices.

[Register](#)

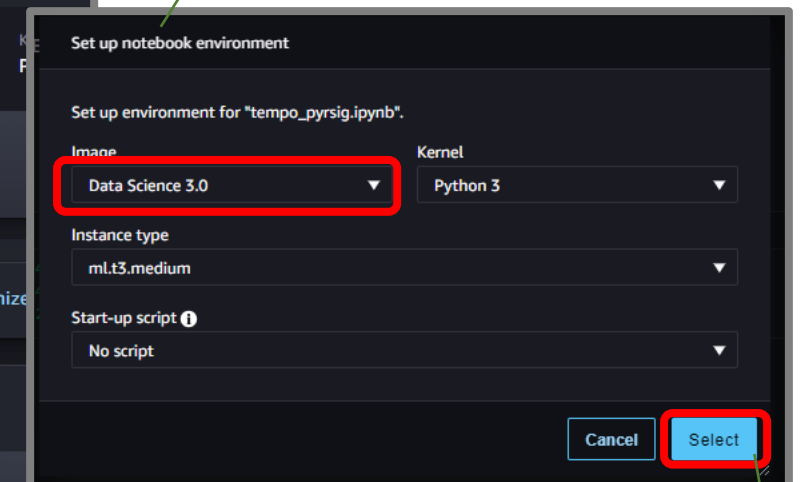


2) After it starts, Select "File", "Open from URL..."

https://gist.githubusercontent.com/barronh/6faf2008a0cf0ac9e49543f31c300601/raw/tempo_pysig.ipynb



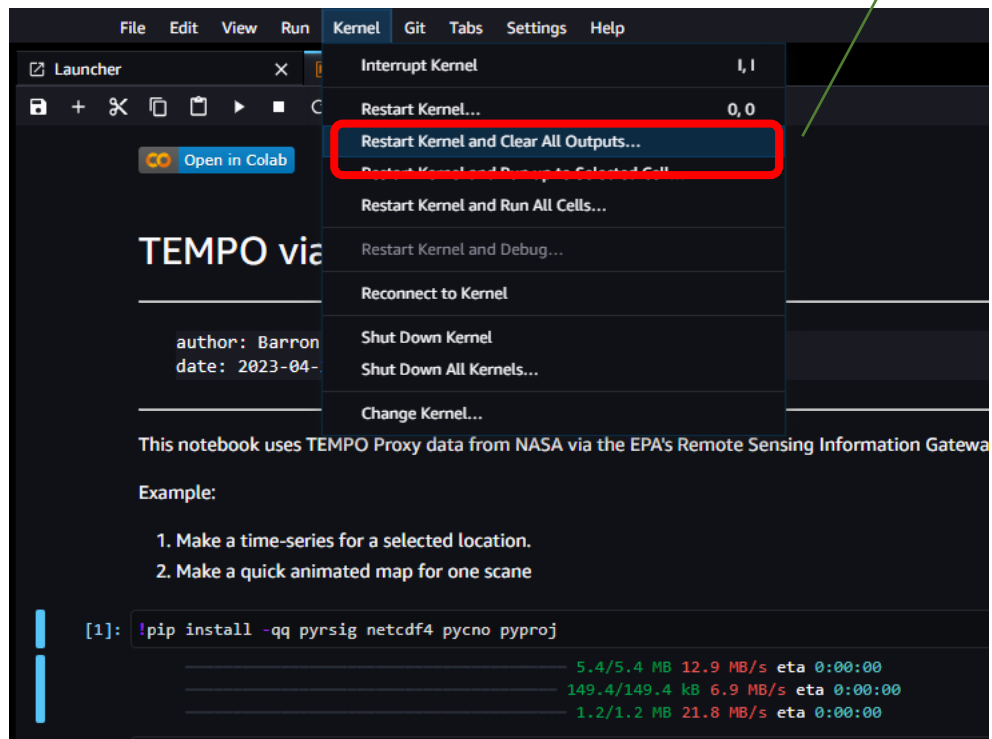
3) Configure environment:
Image: Data Science 3.0,
Kernel: Python 3
Instance: ml.t3.medium
Start-up script: No script



4) Select (and wait)

Now run the code and get results

1) Select “Kernel” Restart Kernel and Clear Outputs



2) Click play on each cell, review, repeat



A cell input can contain Python (default) or bash

Cell status:
[] not run
[*] running
[1] run order

A cell output can be text or a figure



Compare your results to [Github](#)

Questions?

henderson.barron@epa.gov

