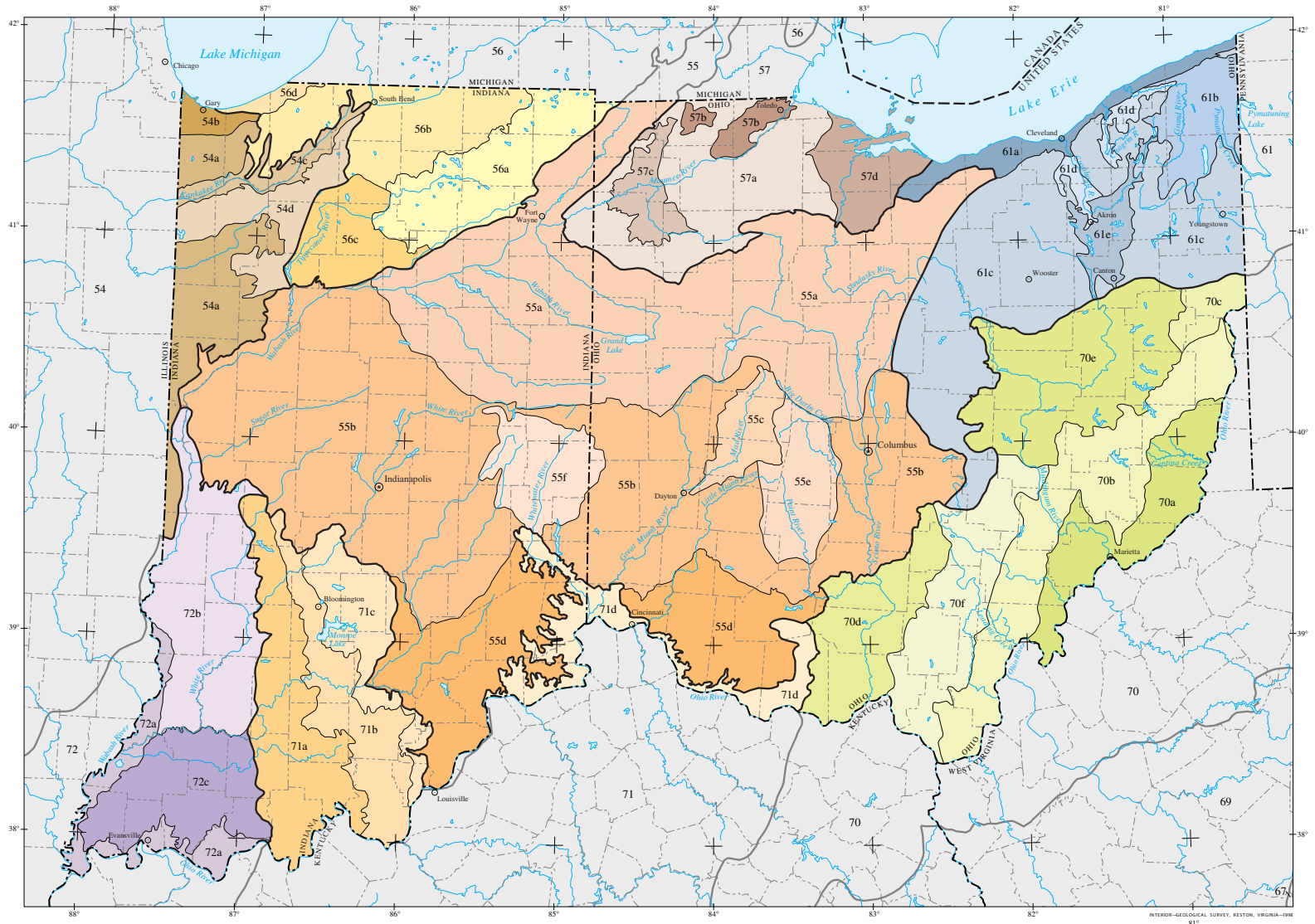


# Ecoregions of Indiana and Ohio



- |  |   |   |   |   |
|--|---|---|---|---|
| <p><b>54 Central Corn Belt Plains</b></p> <ul style="list-style-type: none"> <li>54a Illinois/Indiana Prairies</li> <li>54b Chicago Lake Plain</li> <li>54c Kankakee Marsh</li> <li>54d Kankakee Sand Area</li> </ul>  | <p><b>56 Southern Michigan/Northern Indiana Drift Plains</b></p> <ul style="list-style-type: none"> <li>56a Lake Country</li> <li>56b Elkhart Till Plains</li> <li>56c Middle Tippecanoe Plains</li> <li>56d Michigan Lake Plain</li> </ul> | <p><b>61 Erie/Ontario Drift and Lake Plain</b></p> <ul style="list-style-type: none"> <li>61a Erie Lake Plain</li> <li>61b Mosquito Creek/Pymatuning Lowlands</li> <li>61c Low Lime Drift Plain</li> <li>61d Erie Gorges</li> <li>61e Summit Interlobate Area</li> </ul>  | <p><b>71 Interior Plateau</b></p> <ul style="list-style-type: none"> <li>71a Crawford Uplands</li> <li>71b Mitchell Plain</li> <li>71c Norman Upland</li> <li>71d Northern Bluegrass</li> </ul>   | <p><b>72 Interior River Lowland</b></p> <ul style="list-style-type: none"> <li>72a Wabash Bottomlands</li> <li>72b Glaciated Wabash Lowlands</li> <li>72c Southern Wabash Lowlands</li> </ul> |
| <p><b>55 Eastern Corn Belt Plains</b></p> <ul style="list-style-type: none"> <li>55a Clayey, High Lime Till Plains</li> <li>55b Loamy, High Lime Till Plains</li> <li>55c Mad River Interlobate Area</li> <li>55d Pre-Wisconsinan Drift Plains</li> <li>55e Darby Plains</li> <li>55f Whitewater Interlobate Area</li> </ul> | <p><b>57 Huron/Erie Lake Plains</b></p> <ul style="list-style-type: none"> <li>57a Maumee Lake Plains</li> <li>57b Oak Openings</li> <li>57c Paulding Plains</li> <li>57d Marblehead Drift/Limestone Plain</li> </ul>                       | <p><b>70 Western Allegheny Plateau</b></p> <ul style="list-style-type: none"> <li>70a Permian Hills</li> <li>70b Monongahela Transition Zone</li> <li>70c Pittsburgh Low Plateau</li> <li>70d Lower Scioto Dissected Plateau</li> <li>70e Unglaciated Upper Muskingum Basin</li> <li>70f Ohio/Kentucky Carboniferous Plateau</li> </ul> | <p>Legend for boundaries:</p> <ul style="list-style-type: none"> <li>Level III ecoregion</li> <li>Level IV ecoregion</li> <li>County boundary</li> <li>State boundary</li> <li>International boundary</li> </ul> <p>Scale: 15 10 5 0 30 60 mi / 30 20 10 0 60 120 km</p> <p>Albers equal area projection<br/>standard parallels 38° 40' N and 41° 20' N</p> |   |

INTERIOR—GEOLOGICAL SURVEY, RESTON, VIRGINIA—1998