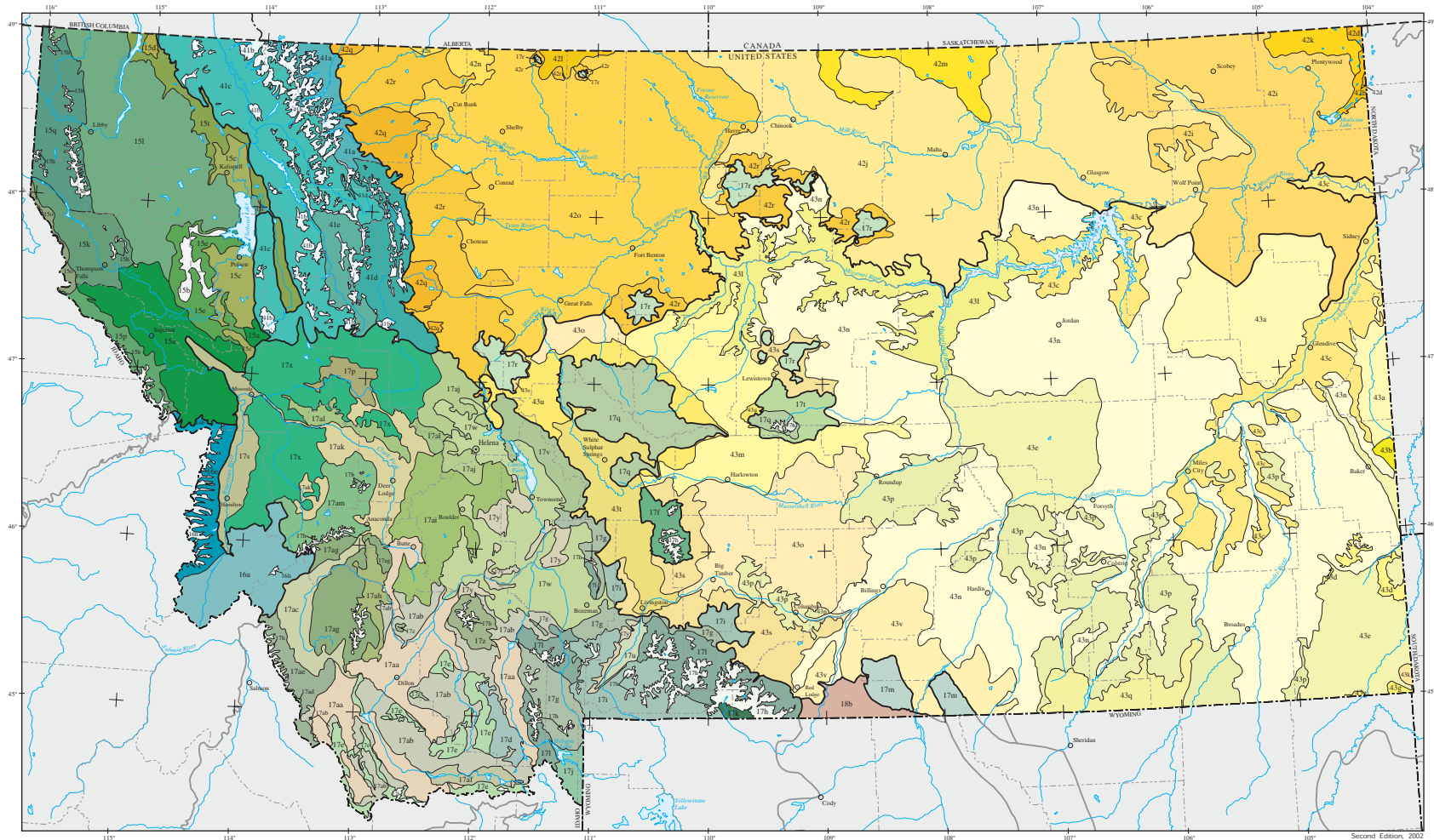


# DRAFT 2 Ecoregions of Montana Second Edition



- 15 Northern Rockies**
- 15a Grave Creek Range-Nine Mile Divide
  - 15b Camas Valley
  - 15c Flathead Valley
  - 15d Tobacco Plains
  - 15e Flathead Hills and Mountains
  - 15i High Northern Rockies
  - 15l Clearwater Mountains and Breaks
  - 15k Clark Fork Valley and Mountains
  - 15l Salish Mountains
  - 15o Coeur d'Alene Metasedimentary Zone
  - 15p St. Joe Schist-Gneiss Zone
  - 15q Purcell-Cabinet-North Bitterroot Mountains
  - 15t Stillwater-Swan Wooded Valley
- 16 Idaho Batholith**
- 16a Eastern Batholith
  - 16b Lochsa Uplands
  - 16c Glaciated Bitterroot Mountains and Canyons
  - 16h High Idaho Batholith

- 17 Middle Rockies**
- 17d Eastern Gravelly Mountains
  - 17e Barren Mountains
  - 17f Crazy Mountains
  - 17g Mid-Elevation Sedimentary Mountains
  - 17h Alpine Zone
  - 17i Absaroka-Callatin Volcanic Mountains
  - 17j Yellowstone Plateau
  - 17k Granite Subalpine Zone
  - 17l Gneissic-Schistose Forested Mountains
  - 17m Dry Mid-Elevation Sedimentary Mountains
  - 17p Foothill Potholes
  - 17q Big Snowy-Little Belt Carbonate Mountains
  - 17r Scattered Eastern Igneous-Core Mountains
  - 17s Bitterroot-Frenchtown Valley
  - 17t Limy Foothill Savanna
  - 17u Paradise Valley
  - 17v Big Belt Forested Highlands
  - 17w Townsend Basin
  - 17x Rattlesnake-Blackfoot-South Swan-Northern
  - 17y Garnet-Sapphire Mountains
  - 17z Townsend-Horseshoe-London Sedimentary Hills

- 18 Wyoming Basin**
- 18b Bighorn Basin
- 41 Canadian Rockies**
- 41a Northern Front
  - 41b Crestal Alpine-Subalpine Zone
  - 41c Western Canadian Rockies
  - 41d Southern Carbonate Front
  - 41e Flathead Thrust Faulted Carbonate-Rich Mountains
- 17z Tobacco Root Mountains**
- 17aa Dry Intermontane Sagebrush Valleys
  - 17ab Dry Gneissic-Schistose-Volcanic Hills
  - 17ac Big Hole
  - 17ad Western Beaverhead Mountains
  - 17ae Forested Beaverhead Mountains
  - 17af Absaroka-Callatin Volcanic Mountains
  - 17ag Pioneer-Anaconda Ranges
  - 17ah Eastern Pioneer Sedimentary Mountains
  - 17ai Elkhorn Mountains-Boulder Batholith
  - 17aj Eastern Divide Mountains
  - 17ak Deer Lodge-Philipsburg-Avon Grassy Intermontane Hills and Valleys
  - 17al Southern Garnet Sedimentary-Volcanic Mountains
  - 17am Centennial Basin

- 42 Northwestern Glaciated Plains**
- 42b Collapsed Glacial Outwash
  - 42d Northern Missouri Coteau
  - 42i Glaciated Dark Brown Prairie
  - 42j Glaciated Northern Grasslands
  - 42k Coteau Lakes Upland
  - 42l Sweetgrass Uplands
  - 42m Cherry Patch Moraines
  - 42n Milk River Pothole Upland
  - 42o North Central Brown Glaciated Plains
  - 42q Rocky Mountain Front Foothill Potholes
  - 42r Foothill Grassland
- 43 Northwestern Great Plains**
- 43a Missouri Plateau
  - 43b Little Missouri Badlands
  - 43c River Breaks
  - 43d Forested Buttes
  - 43e Sagebrush Steppe
  - 43g Semiarid Pierre Shale Plains
  - 43k Dense Clay Prairie
  - 43l Missouri Breaks Woodland-Scrubland
  - 43m Judith Basin Grassland
  - 43n Montana Central Grasslands
  - 43o Unglaciated Montana High Plains

- 43p Pine Scoria Hills
  - 43q Mesic Dissected Plains
  - 43s Non-calcareous Foothill Grassland
  - 43t Shield-Smith Valleys
  - 43u Limy Foothill Grassland
  - 43v Pryor-Big Horn Foothills
- Level III ecoregion  
 — Level IV ecoregion  
 - - - County boundary  
 - - - State boundary  
 - - - International boundary
- 15 10 5 0 30 60 mi  
 30 20 10 0 60 120 km
- Albers equal area projection  
 Standard parallels 46° N and 48° N