

# Thurston County Toxic Algae Monitoring 2017

Responded to algae blooms on 13 lakes

## Advisory

Lake Lawrence - 3 weeks

Long Lake – 6 weeks

Clear Lake – 6 weeks

**Summit Lake - 9 weeks  
- drinking water source**



### CAUTION

**TOXIC ALGAE MAY BE PRESENT**  
Lake may be unsafe for people and pets

Until further notice:

- Do not swim or water ski in areas of scum.  
*No nadar ni patinar en zonas con algas o espuma.*
- Do not drink lake water.  
*No beber el agua del lago.*
- Keep pets and livestock away.  
*Mantenga alejados los animales y el ganado.*
- Clean fish well and discard guts.  
*Limpie bien el pescado y deséchelo los tripas.*
- Avoid areas of scum when boating.  
*Evite las zonas con espuma o verdor cuando navegue en bote.*

Call your doctor or veterinarian if you or your animals have  
symptoms or unusual behavior or signs of poisoning.

Report your observations to Thurston County: **360-467-6000** Call your local health department

For more information, visit [www.thurstoncountyparks.com](http://www.thurstoncountyparks.com) or call 360-467-6000

### WARNING

**TOXIC ALGAE PRESENT**  
Lake unsafe for people and pets

Until further notice:

- Do not swim or water ski.  
*No nadar ni patinar en zonas con algas o espuma.*
- Do not drink lake water.  
*No beber el agua del lago.*
- Keep pets and livestock away.  
*Mantenga alejados los animales y el ganado.*
- Clean fish well and discard guts.  
*Limpie bien el pescado y deséchelo los tripas.*
- Avoid areas of scum when boating.  
*Evite las zonas con espuma o verdor cuando navegue en bote.*

Call your doctor or veterinarian if you or your animals have  
symptoms or unusual behavior or signs of poisoning.

Report your observations to Thurston County: **360-467-6000** Call your local health department

For more information, visit [www.thurstoncountyparks.com](http://www.thurstoncountyparks.com) or call 360-467-6000

### DANGER

**LAKE CLOSED**  
due to toxic algae

**KEEP OUT  
OF LAKE**

Call your doctor or veterinarian if you or your animals have  
symptoms or unusual behavior or signs of poisoning.

Report your observations to Thurston County: **360-467-6000** Call your local health department

For more information, visit [www.thurstoncountyparks.com](http://www.thurstoncountyparks.com) or call 360-467-6000

# CAUTION

## TOXIC ALGAE MAY BE PRESENT

Lake may be unsafe for people and pets

### Until further notice:

- **Do not swim or water ski.**

No nade o practique el esquí acuático espuma o verdín.

- **Do not drink lake water.**

No tome el agua del lago.

- **Keep pets and livestock away.**

Mantenga alejados las mascotas y el ganado.

- **Clean fish well and discard guts.**

Limpie bien el pescado y deseche las tripas.

- **Avoid areas of scum when boating.**

Evite las áreas con espuma o verdín cuando ande en lancha.

Call your doctor or veterinarian if you or your animals have sudden or unexplained sickness or signs of poisoning.

Report new algae blooms to Department of Ecology:

**360-407-6000**

For more information: [www.doh.wa.gov/ehp/algae/](http://www.doh.wa.gov/ehp/algae/)  
[www.ecy.wa.gov/programs/wq/plants/algae/index.html](http://www.ecy.wa.gov/programs/wq/plants/algae/index.html)

# WARNING

## TOXIC ALGAE PRESENT

Lake unsafe for people and pets

### Until further notice:

- **Do not swim or water ski.**

No nade o practique el esquí acuático.

- **Do not drink lake water.**

No tome el agua del lago.

- **Keep pets and livestock away.**

Mantenga alejados las mascotas y el ganado.

- **Clean fish well and discard guts.**

Limpie bien el pescado y deseche las tripas.

- **Avoid areas of scum when boating.**

Evite las áreas con espuma o verdín cuando ande en lancha.



Call your doctor or veterinarian if you or your animals have sudden or unexplained sickness or signs of poisoning.

Report new algae blooms to Department of Ecology:

**360-407-6000**

Call your local health department:

For more information: [www.doh.wa.gov/ehp/algae/](http://www.doh.wa.gov/ehp/algae/)  
[www.ecy.wa.gov/programs/wq/plants/algae/index.html](http://www.ecy.wa.gov/programs/wq/plants/algae/index.html)



# DANGER

## LAKE CLOSED

due to toxic algae

## KEEP OUT OF LAKE

Call your doctor or veterinarian if you or your animals have sudden or unexplained sickness or signs of poisoning.

Report new algae blooms to Department of Ecology:

**360-407-6000**

Call your local health department:

For more information: [www.doh.wa.gov/ehp/algae/](http://www.doh.wa.gov/ehp/algae/)  
[www.ecy.wa.gov/programs/wq/plants/algae/index.html](http://www.ecy.wa.gov/programs/wq/plants/algae/index.html)



# Washington State Toxic Algae

## [www.nwToxicAlgae.org](http://www.nwToxicAlgae.org)



Thurston County Public Health and Social Services  
Environmental Health Division

## High Levels of Toxic Algae - Summit Lake Advisory

May 8, 2017

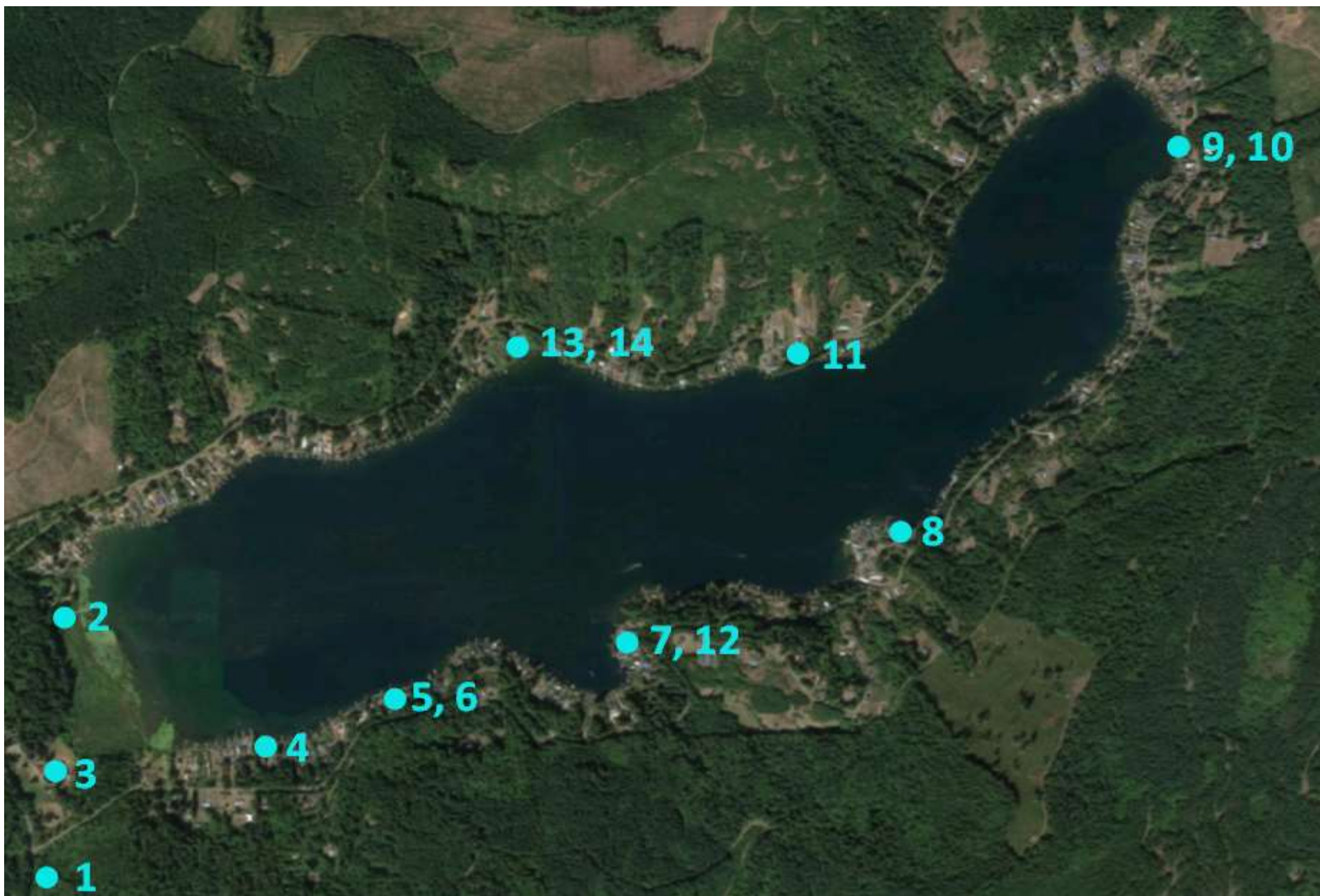
Dear Summit Lake Residents and Users,

Thurston County Health Department has detected very high levels of Anatoxin-A, a toxic algae in Summit Lake. This is a very potent nerve toxin, and residents are advised not to use the water.

Many residents around Summit Lake depend on the lake for drinking water. When there is an algae bloom present, precautions should be taken to avoid the health risks posed by potential toxins.

- Do not drink water taken from the lake until laboratory tests show the water is safe. Disinfection, boiling, and treatment systems do not remove





Site	Sample Type	Anatoxin Level 5/4/17	Anatoxin Level 5/9/17	Anatoxin Level 5/15/17	Anatoxin Level 5/22/17	Anatoxin Level 5/30/17
1	Tap (well water)	-	< MRL	-	-	-
2	Lake	-	< RDL (0.020)	< RDL (0.012)	59.06	0.012
3	Tap (well water)	-	< MDL	< MRL	-	-
4	Lake	-	5.86	< RDL (0.014)	0.673	0.028
5	Lake	-	< RDL (0.012)	0.212	0.016	-
6	Tap	-	< MRL	< MRL	< MRL	-
7	Tap Intake: 30' out, 10' deep	-	< MRL	< MRL	< MRL	< MRL
8	Lake	-	< RDL (0.019)	1.62	1.87	0.039
9	Lake	354.3	69.19	181.72	66.53	0.036
10	Tap Intake: 40' out, 4' deep	-	< MRL	0.0518	0.044	< MRL
11	Lake	-	50.43	0.137	0.193	0.061
12	Lake	-	-	< RDL (0.026)	0.160	0.033
13	Tap Intake: 150' out, 30' deep	-	-	< MRL	< MRL	< MRL
14	Lake	-	-	175.94	114.72	19.92

## **Public Communication**

Signs

Algae email alert list

Websites – local & state

Traditional media (lots of it)

Social media

Community assoc. email list

Phone message line updated regularly

Talking points for staff

Phone calls

Public meeting

## **Internal Communication**

Issue alert

Briefings

Incident response reports

Staff updates

Partner calls & emails

[illegible]

Toxin	No Drinking		No Household Use	No Fish Consumption		No Recreation	Lake Closure or No Contact
	Child	Adult		Child	Adult		
Anatoxin-a Thurston	1.0	1.0	1.0	1.0	1.0	1.0	8
EPA							
Washington						1	
Oregon	0.7	3				8	
Ohio	20	20	300			80	300
Minnesota	0.1	0.1					
Microcystin Thurston	0.3	1.6		4	4	4	6
EPA	0.3	1.6				4- draft	
Washington						6	
Oregon	0.3	1.6				4	
Ohio	0.3	1.6	20			6	20
Minnesota							