

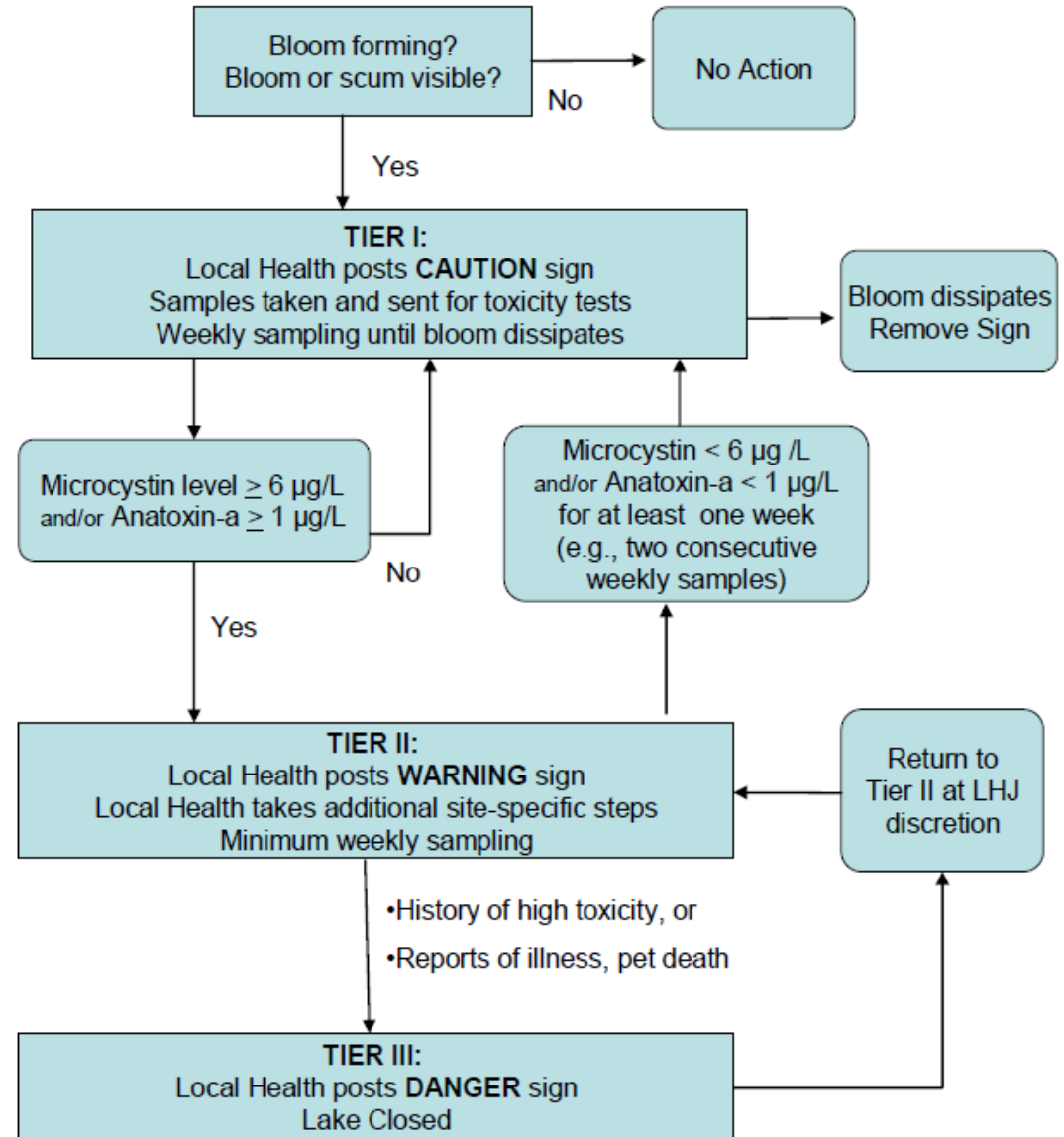
Washington State Recreational Guidance for Microcystins (Provisional) and Anatoxin-a (Interim/Provisional)

July 2008

RECREATIONAL GUIDELINES

Toxin	EPA	Washington State
Microcystin	$\geq 8 \mu\text{g/L}$	$\geq 6 \mu\text{g/L}$
Cylindrospermopsin	$\geq 15 \mu\text{g/L}$	$\geq 4.5 \mu\text{g/L}$
Anatoxin		$\geq 1 \mu\text{g/L}$
Saxitoxin		$\geq 75 \mu\text{g/L}$

Figure 1. Three-tiered approach to managing Washington water bodies with cyanobacterial blooms.



Tier I

