



NOAA
FISHERIES

Update on Columbia Basin Partnership Task Force to Columbia River Basin Toxics Reduction Working Group

October 30, 2018

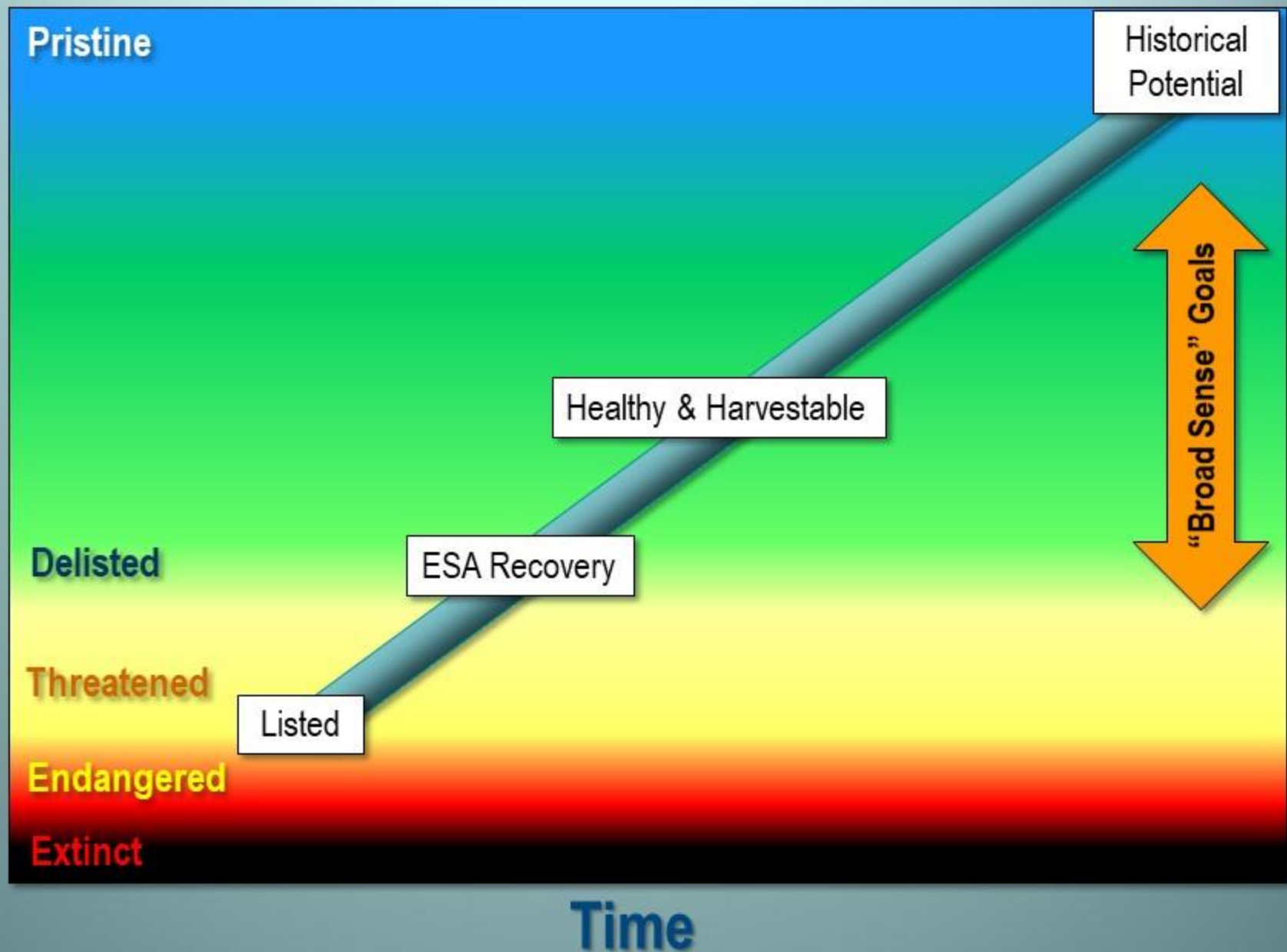
CBP Task Force Formation

- NOAA Fisheries solicited stakeholders through a formal process and requested state and tribal representatives from sovereigns.
- CBP Task Force began in January, 2017.
- 28 members from states, tribes as well as diverse interests:
 - NGO/environmental representative(s);
 - Commercial fishing representative(s);
 - Recreational fishing representative(s);
 - Utility representative(s);
 - River industry representative(s);
 - Agricultural/irrigation representative(s); and
 - A local recovery group representative from each state

Desired CBP Task Force Outcomes

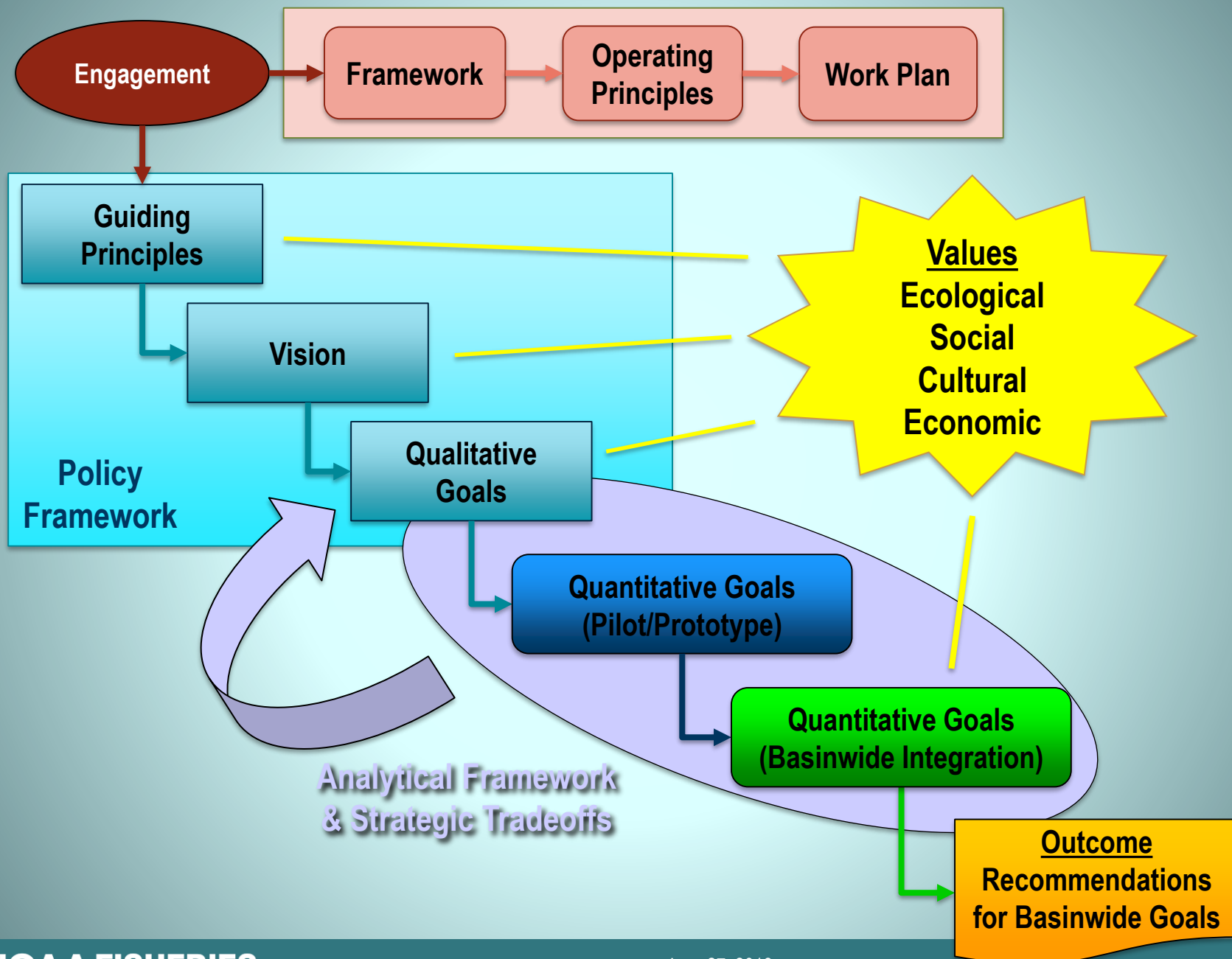
- **Goals** that address both conservation and harvest/fishing aspirations.
- **Goals** that are understandable and consider various users of Columbia Basin resources.
- **Quantitative adult abundance goals for both listed and non-listed stocks.**
- Better coordination, more effective use of resources, and alignment of strategic priorities.
- Enhanced relationships, trust, and knowledge.

Salmon Status



Relationships and Cross-Sector Understanding by CBP Task Force Members

- CBP Task Force membership represents diverse interests and perspectives from across the basin who have not been at one table before.
- Members shared their stories throughout the process to gain a better understanding of each other's core values, interests, and concerns.
- Sharing background information and issue-based discussions have helped provide a common foundation of understanding and increased knowledge of each other's perspectives across sectors.
- Constructive relationships and opportunities for building common ground based on joint interests has emerged from these interactions and this process.



Work Products and Progress: Guiding Principles

- FAIRNESS:
- OPENNESS & TRANSPARENCY
- OBLIGATIONS & RESPONSIBILITIES
- CLARITY
- SUSTAINABILITY
- KNOWLEDGE & WISDOM
- INNOVATION & ADAPTIVENESS
- INTERCONNECTION & COMPLEXITY

Work Products and Progress: Draft Vision

A healthy Columbia River Basin ecosystem with thriving salmon and steelhead that are indicators of clean and abundant water, reliable and clean energy, a robust regional economy, and vibrant cultural and spiritual traditions, all interdependent and existing in harmony.

Work Products and Progress: Provisional Qualitative Goals

- Reflect Guiding Principles and Vision
- Provide a foundation for Quantitative Goals
- Important link between Vision and Quantitative Goals
- Four categories
 - Natural production
 - Hatchery/mitigation
 - Harvest/fisheries
 - Social, cultural, economic, and ecological
- Sub-group development, multiple iterations
- Words matter!

Work Products and Progress:

Provisional Quantitative Goals

- Three categories – natural production, hatchery/mitigation and harvest/fishing.
- Aggregate run reconstructions total all goals.
- Where possible, used goals identified in the variety of recovery, management, and mitigation plans that exist in the basin.
- Started with 5 prototype species; now cover all 24 stocks with geographic subgroups.
 - Includes all salmon and steelhead in the Columbia River Basin and its tributaries, listed and non-listed populations, and historical anadromous production areas that are currently blocked.
- Goals are identified for stock units, based on
 - Species (Chinook, coho, sockeye, and chum salmon; and steelhead)
 - Region of origin (e.g., Lower Columbia, Middle Columbia, Upper Columbia, Snake, or Willamette)
 - Run type (e.g. spring, summer, fall, late fall).

Work Products and Progress:

Provisional Quantitative Goals

- **Goals identify low, medium and high numbers reflecting a continuum of aspiration for progressive improvements to be achieved over an extended time period.**
- **Goals are defined based on abundance of adult salmon and steelhead.**
- **Numbers take into account a number of factors including ESA requirements, habitat constraints and future potential, density dependence, cultural needs of tribes, fishing interests and sustainability, and mitigation responsibilities including currently blocked historical anadromous production areas.**

Work Products and Progress: Provisional Quantitative Goals

- Work was aided by regional teams composed of technical experts with specific experience in the subject area were formed.
- Technical experts were identified by CBP members and generally included local staff from state, tribal, and other partner Task Force participants.
- Work groups operated under the Guiding Principles set by the CBP, including the principle that recommendations be firmly grounded in sound science.

Work Products and Progress: Provisional Quantitative Goals

Natural Production Goals:

- Low end goals represent abundance numbers to avoid listing (for non-ESA listed stocks) or delisting (for ESA listed stocks)
- Mid-range goals are approximately half-way between low end (conservation) goals and the high-end goals.
- High number reflects aspirational “healthy and harvestable” levels that might potentially be achieved with improvements in habitat and other conditions currently limiting stocks.
- High end goals are typically about three times greater than low end goals and generally 50% of historic average or less.

Work Products and Progress:

Provisional Quantitative Goals

Hatchery/Mitigation goals:

- Existing hatchery goals were identified for conservation and mitigation programs throughout the basin. Numbers identify current hatchery production and corresponding adult returns.
- Additional production was identified where:
 - Defined in existing processes and plans (e.g., John Day Mitigation program), or
 - Proposed to address specific purposes identified by CBP members (e.g., currently blocked historical anadromous production areas).

Work Products and Progress: Provisional Quantitative Goals

Harvest/ Fishing Goals:

- Current harvest levels and exploitation rates are identified by species and run type based on the complex of existing plans, agreements, and processes.
- Increases in abundance-based exploitation rates and harvest are projected to result from increasing natural production.
- Task Force members are also working on aspirational fishery goals that would be sustainable from healthy stocks. They will be considered by the full Task Force in October.

Work Products and Progress: Provisional Quantitative Goals

Aggregated Run Sizes:

- Aggregate numbers for natural production, harvest/fishing, and hatchery/mitigation production are reported at basin wide and species scales.
- Useful for evaluating status and goals relative to a variety of needs across the basin.

Recommendations to MAFAC:

Next steps

- The CBP Task Force plans to continue the effort to integrate and further evaluate quantitative goals across species for natural production, hatchery/mitigation, and harvest/fishing purposes.
- **Scenario planning** is one tool that could be used to accomplish this. CBP Task Force members are further developing next steps over the summer for discussion at October meeting.