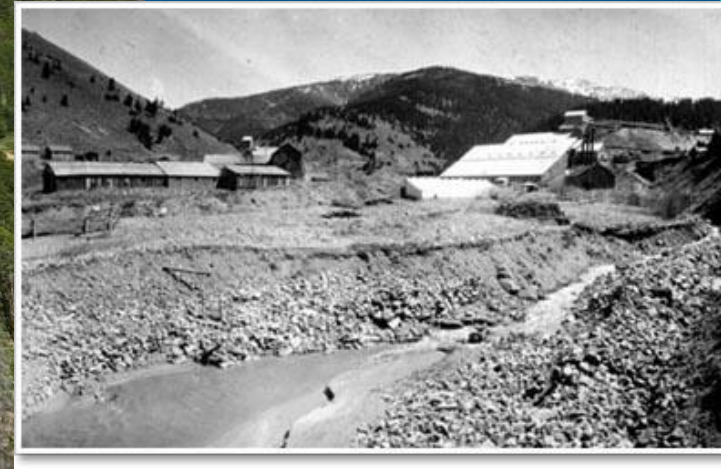
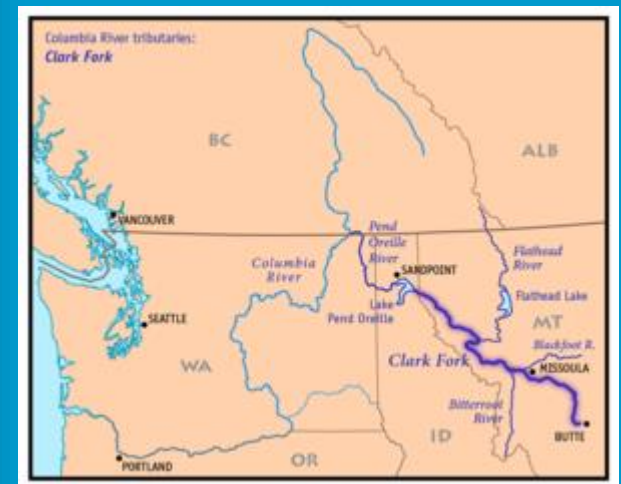
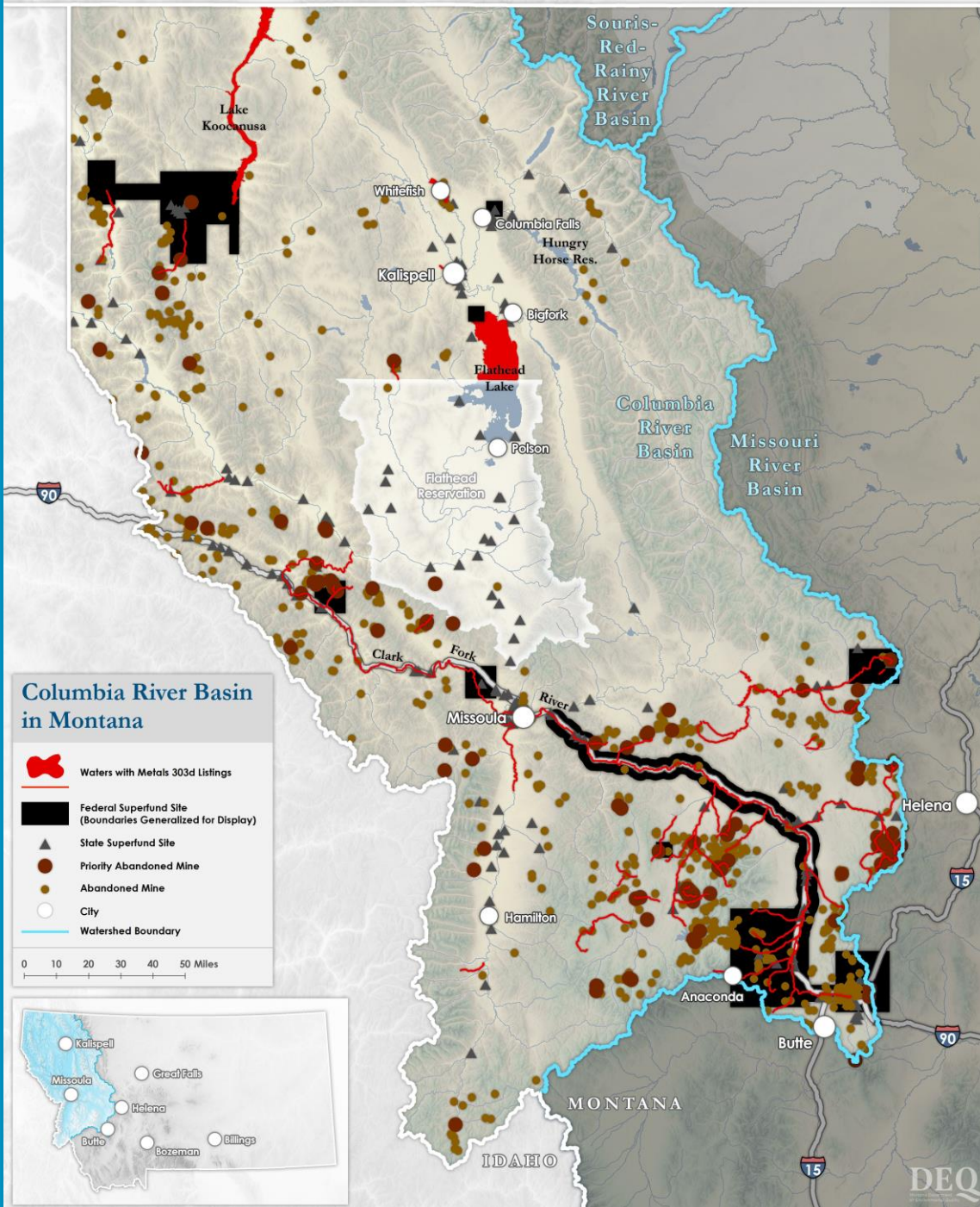


# MT Legacy Mining: Water, Remediation and Successes



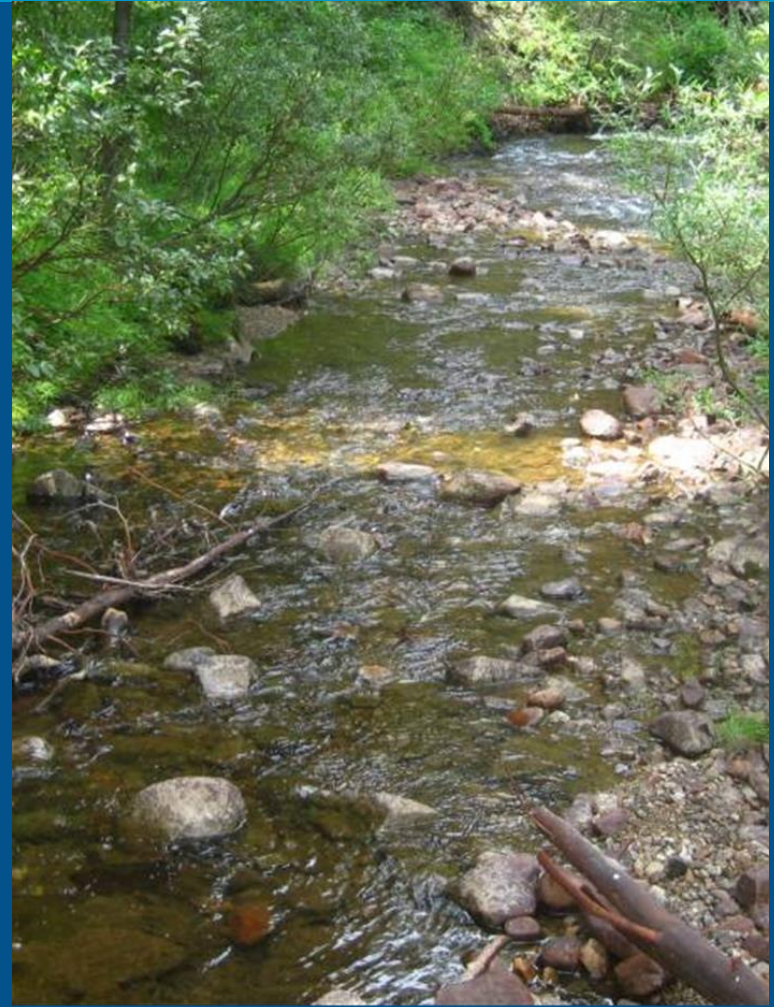


# Industrial and Mining Legacy Sites





# Impacted Surface Water from Mine Drainage



**Before and after cleanup**

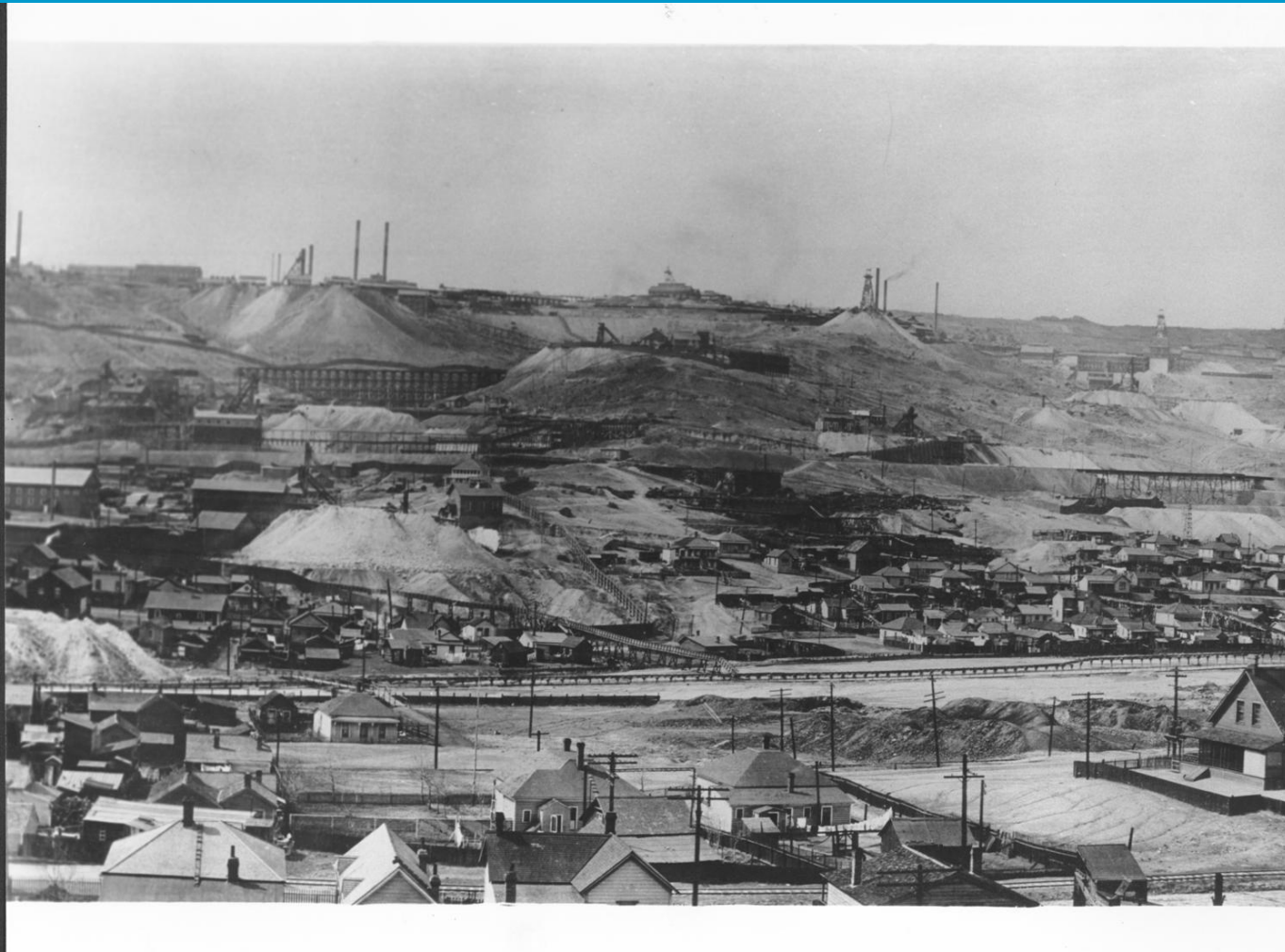


# Mine Impacted Groundwater Upwelling



**Limited Beneficial Use Downstream**

## Historic Butte

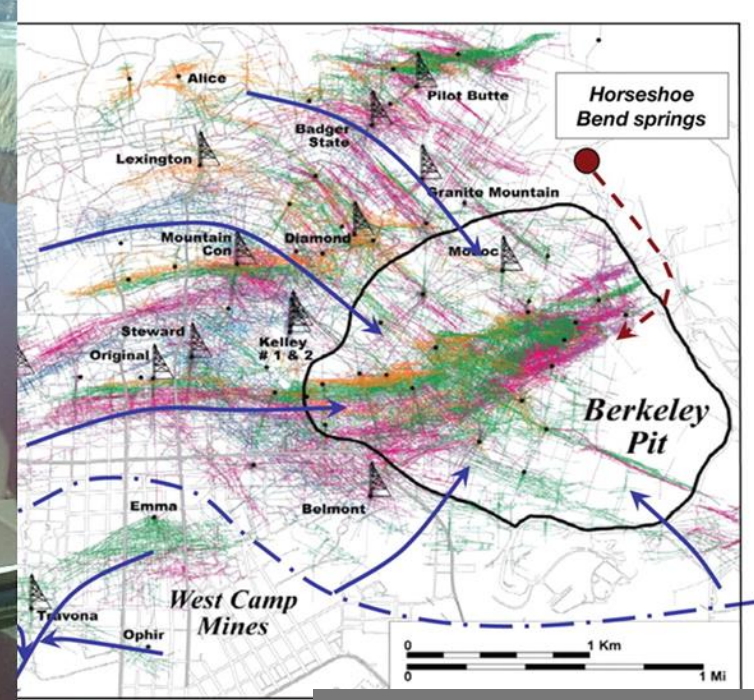


Headwaters of Clark Fork River



# BUTTE MINE FLOODING

2004



2017



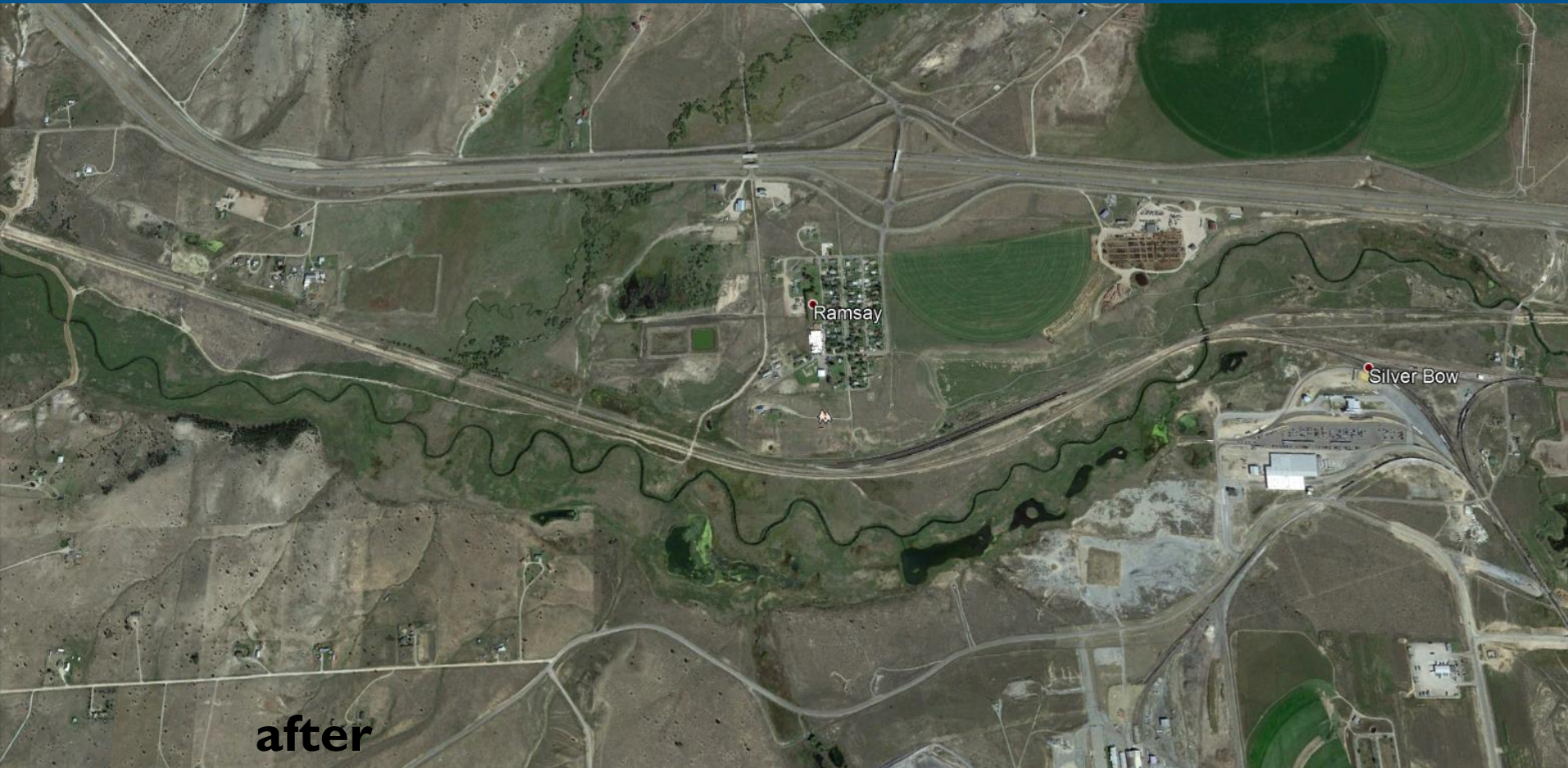


# Silverbow Creek





# Silverbow Creek



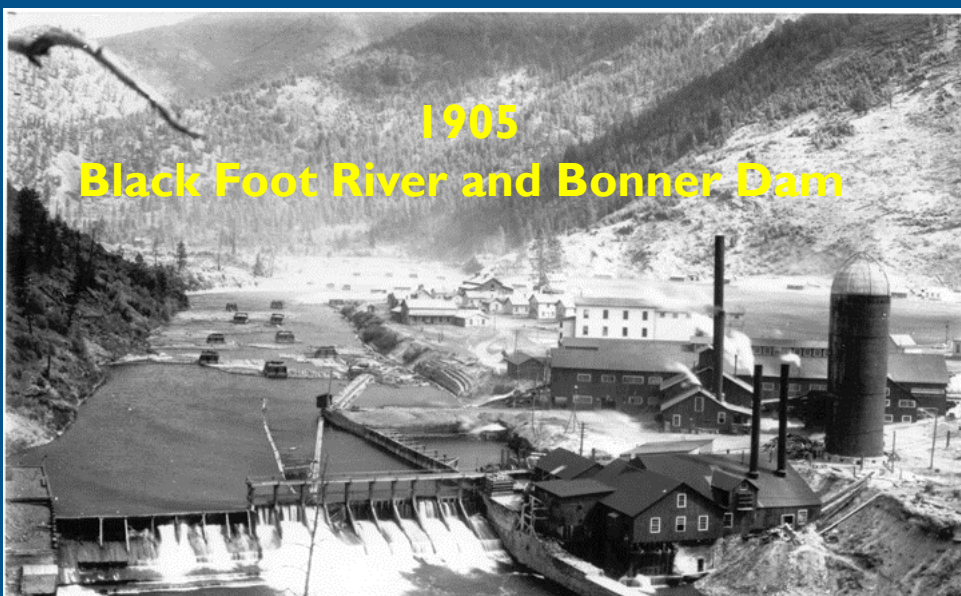




# MILLTOWN DAM PROJECT







**1905**  
**Black Foot River and Bonner Dam**



**Fall 2004**

## **Stimson Bonner Mill**



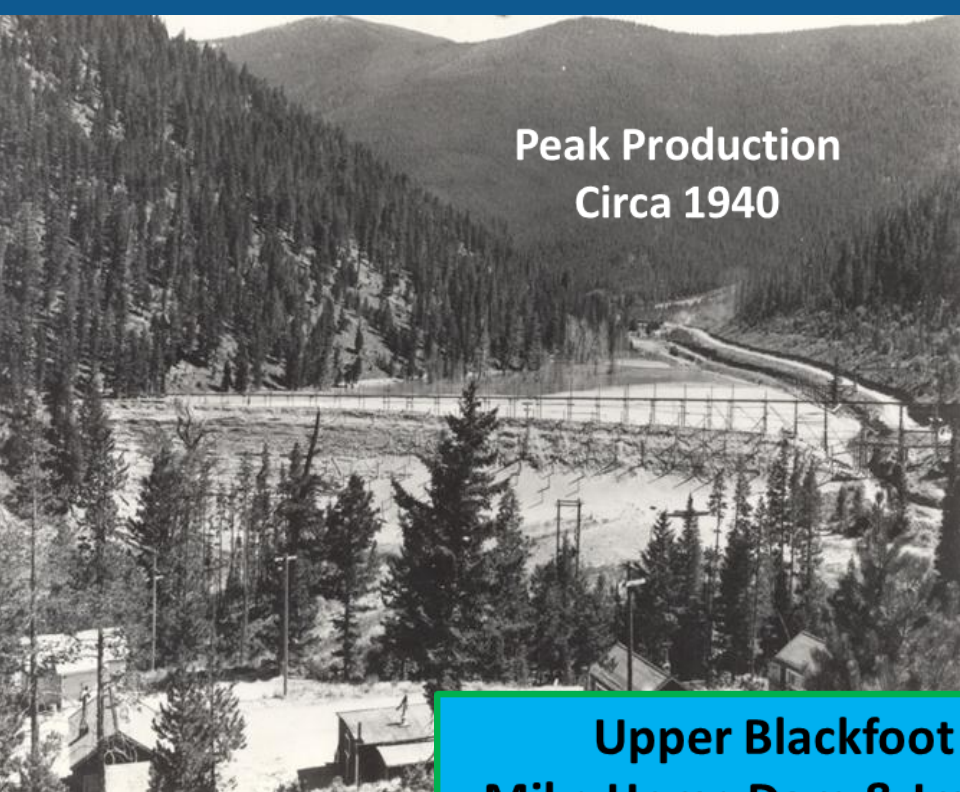
**Fall 2010 construction**



**Fall 2014**

06.24.2014 11:57



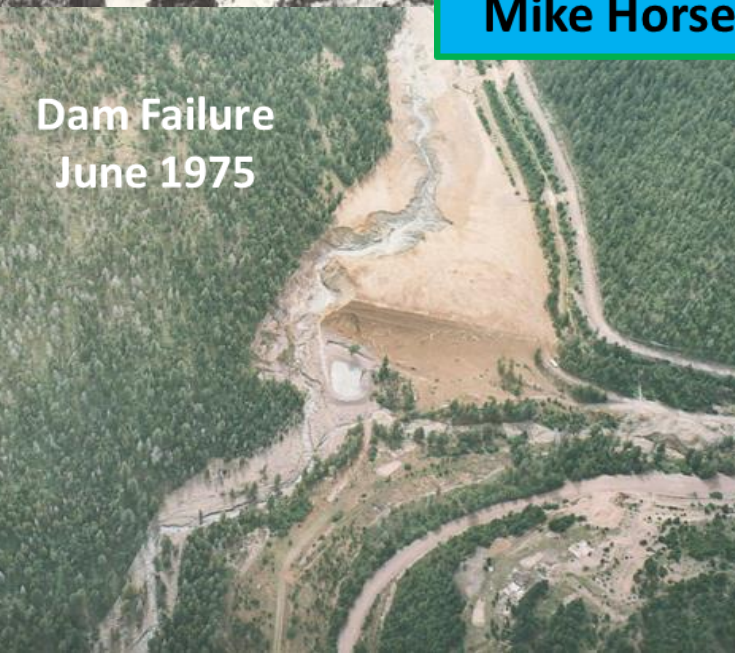


**Peak Production  
Circa 1940**



**Tailings Removal  
Fall 2015**

**Upper Blackfoot Mining Complex  
Mike Horse Dam & Impoundment Removal**



**Dam Failure  
June 1975**



**Restoration  
Summer 2018**



# ONGOING PLANS

- Preliminary Investigation of Phillipsburg Mining District
  - Source of metals and mercury into CFR
  - Impacts to fishery and avian species known but not fully understood
- Investigation of Smurfit Frenchtown Paper Mill
  - National Priority Site
  - Investigation ongoing
- Finalizing Remediation/Restoration Plans
  - Butte Area
  - Anaconda Area
- Continuing Remedial Action
  - Clark Fork River Project (Butte to Missoula)



# UNKNOWNNS AND CONCERNS

- Characterization of latent PCB and Hg in the Clark Fork River
  - Additional Investigation need in Phillipsburg Mining District (Hg)
  - Additional Investigation needed downstream of Missoula (PCBs)



# QUESTIONS AND CONTACTS

- Darrin Kron (Primary)
  - Water Quality Monitoring and Assessment Section Supervisor
  - dkron@mt.gov
  - Phone: 406-444-4765
- Tom Stoops PG, CHG (mining topics)
  - Federal Superfund Construction Bureau Chief
  - 406-444-6445
  - tstoops@mt.gov