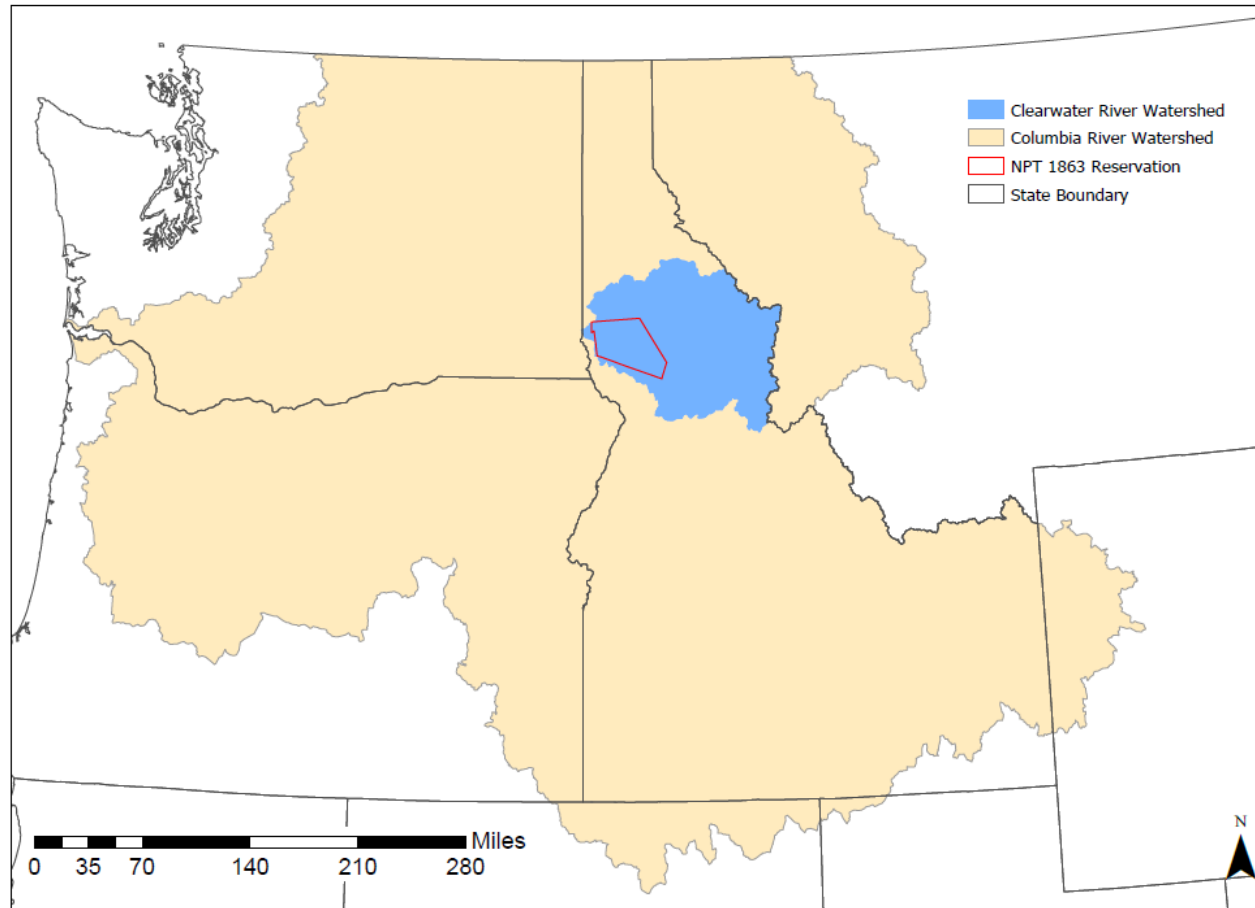


Clearwater River Watershed Baseline Monitoring and Toxics Assessment



Location of the Clearwater River and the Nez Perce Reservation in the Columbia River Basin



- Objective 1: Monitor surface water and sediment in the tributaries of the Clearwater River for pesticides, DDT, and metals.

- Task 1- 15 Sites

- Objective 2: Establish baseline toxin/pollutant data in the Clearwater River.

- Task 1- Surface water from 6 sites
- Task 2- sediment, fish, mussel, and lamprey ammocete tissue samples from 4 locations
- Task 3- Microplastics study on fish samples

