

Pollution Prevention Assistance Partnership

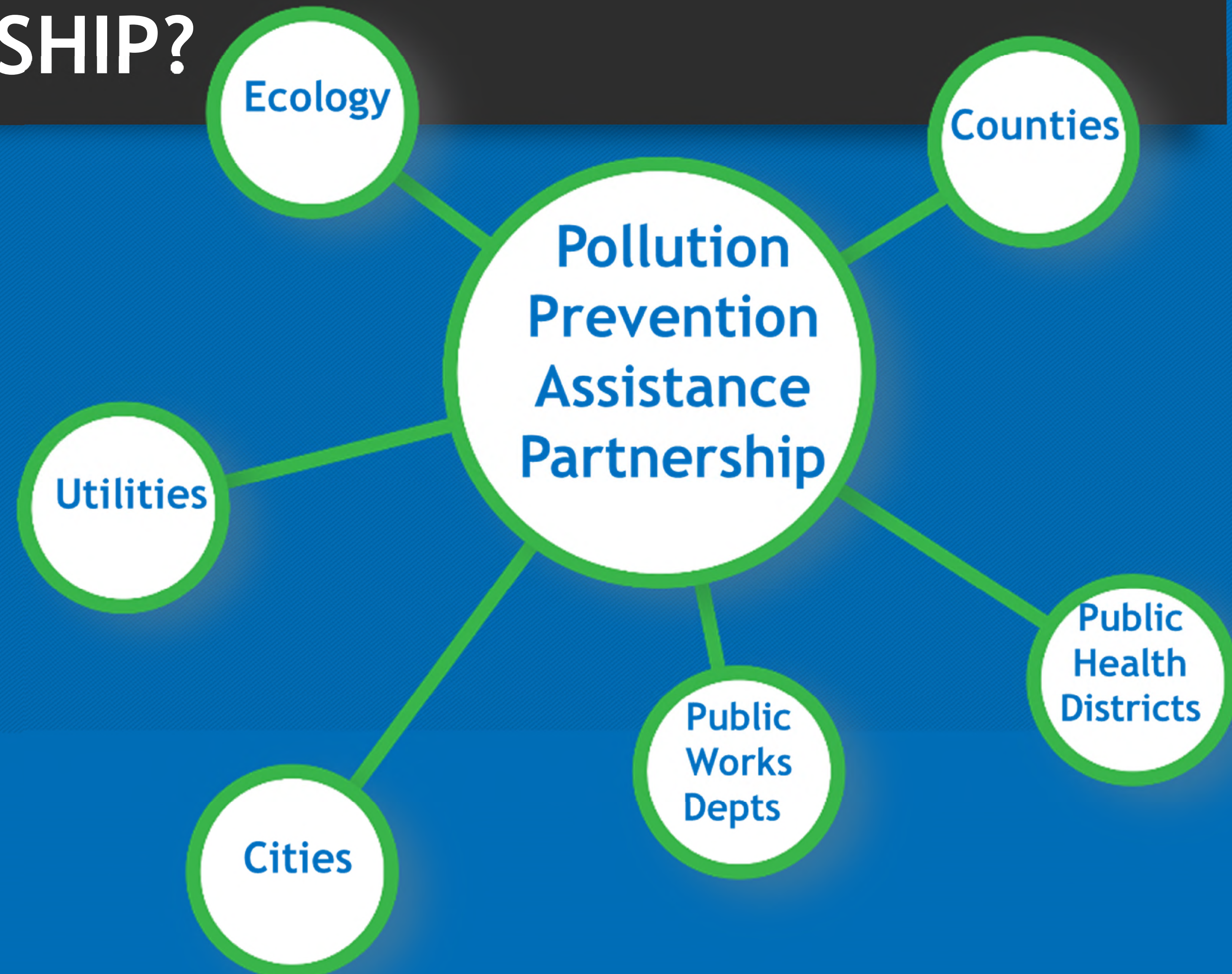
Working Safely During the Pandemic

Elaine Snouwaert - WA Ecology
PPA Partnership Coordinator



WHO MAKES UP THE PARTNERSHIP?

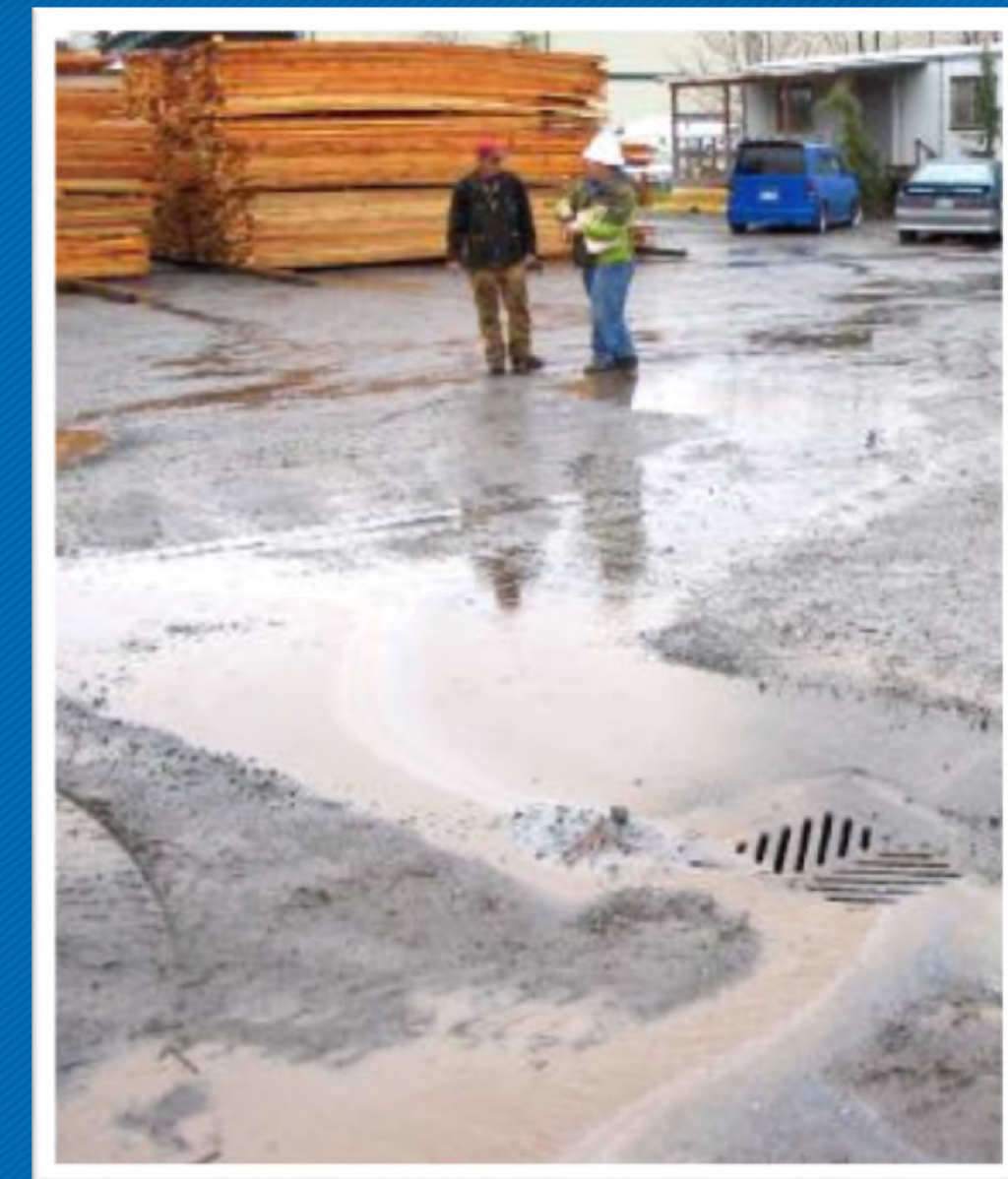
2



What we do!

3

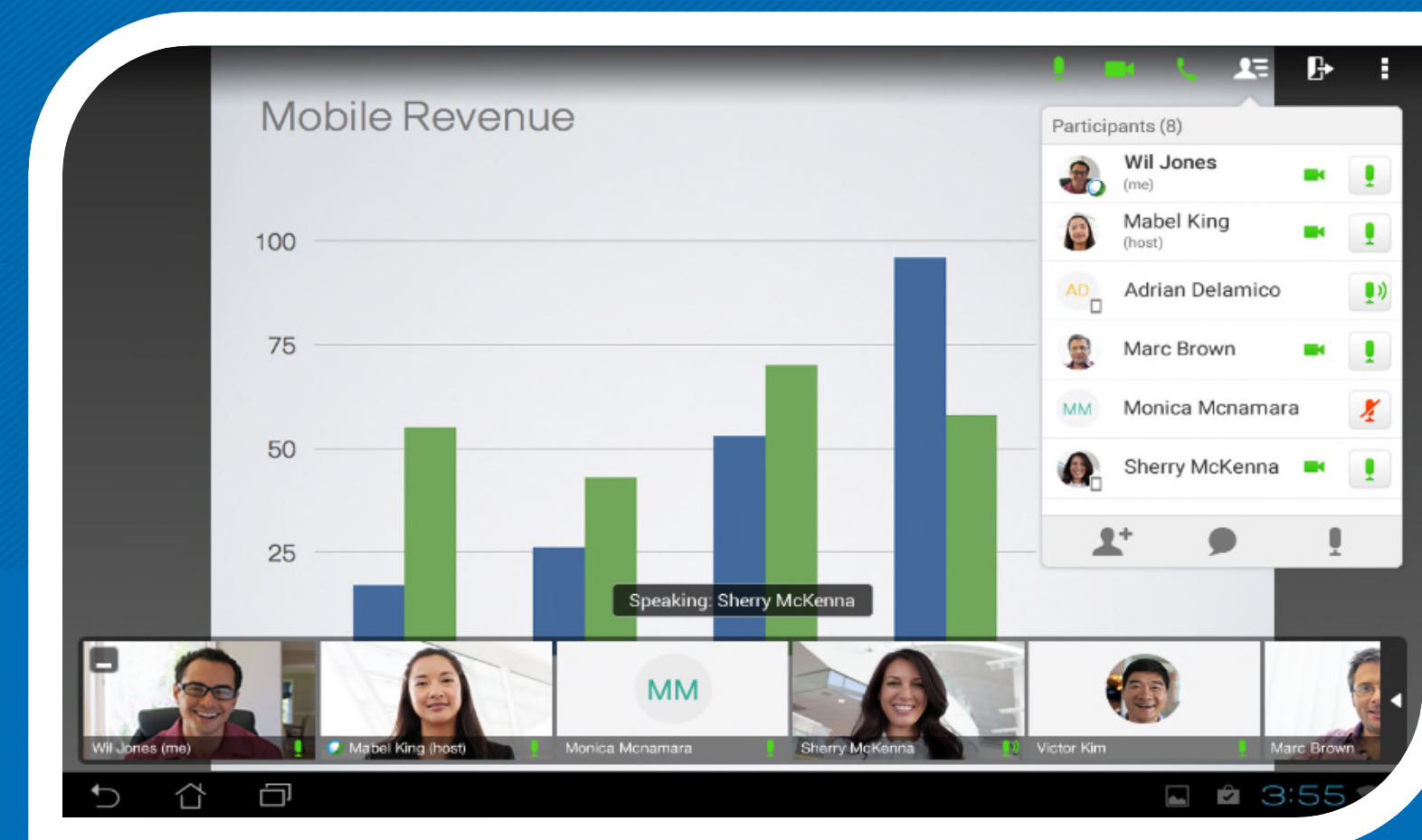
- Technical Assistance Visits
- Incentives
- Unique Program Elements
- Training and Collaboration



How we've adapted and flexed

4

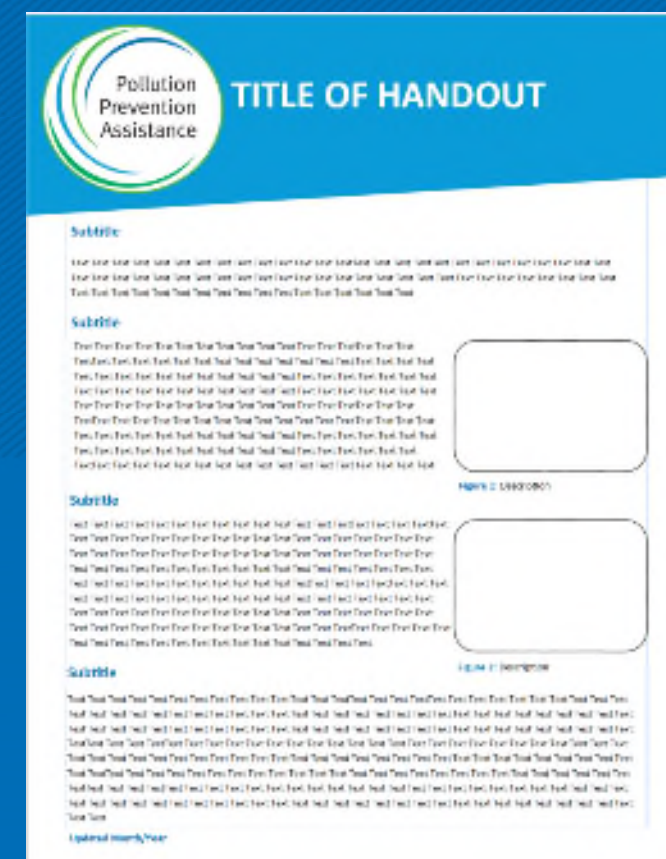
- In-Person Trainings shifted to virtual
 - April NAHMMMA conference
 - Fall meeting
 - New Specialist training moving to online modules



How we've adapted and flexed

5

- Unique Program Element Projects
 - Added Specialists to our Sector Specific Checklist Committee
 - Created a BMP outreach material team
 - Created a Innovative Return to Fieldwork Committee
 - Created a Resource Consistency Workgroup



How we've adapted and flexed

6

- Shift and refocus Business Visits
 - Sector changes
 - What counts as a visit
 - Recognition of time and deliverable changes



Questions?

7

Thank you!

