

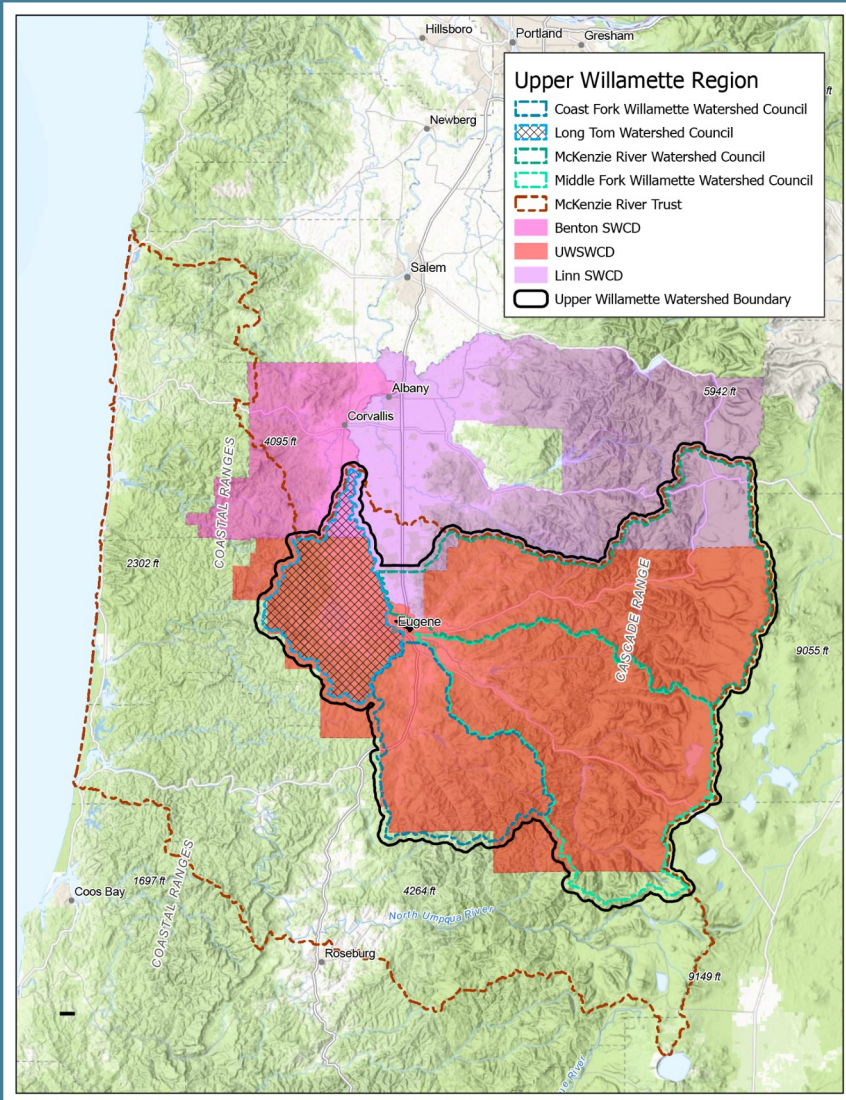
# Urban Waters & Wildlife Partnership: Building Regional Collaboration

Presenter: Kirk Shimeall, Cascade Pacific Resource Conservation & Development  
For the EPA Columbia River Basin Restoration Working Group





# Coordinate on Regional Goals for Water Quality in Urban Environs



- Develop community understanding of human impacts on urban waters and wildlife.
- Foster community engagement in the protection and enhancement of urban waters.
- Engage businesses by providing technical assistance to implement voluntary stormwater improvement measures, including but not limited to retrofit projects.
- Leverage local and external resources to promote voluntary stormwater retrofit projects.
- Develop a monitoring framework to identify trends and monitor efficacy of stormwater improvement measures.
- Improve wildlife habitat by planting native vegetation and increasing habitat complexity.
- Build and support local workforce capacity in the field of urban water quality.
- Distribute program benefits equitably.
- Increase authentic engagement of BIPOC (Black Indigenous & People of Color) and other historically marginalized communities and incorporate their priorities into programming.
- Continue to collaboratively develop the Partnership, our processes, and programmatic structure.

# Urban Waters & Wildlife Partnership

## Partners



**Mission:** To improve and protect water quality and wildlife habitat in our urban waterways and aquifers for healthy, livable communities

## Partnership Structure



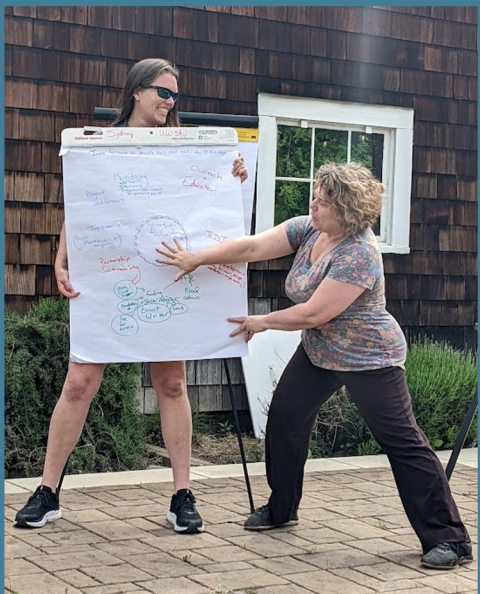
# Agreement Structure:

*One overarching  
Memorandum of  
Understanding...*

*That outlines  
Partnership  
Mission & Goals*

With individual adoption agreements tailored to each organization's Roles & Responsibilities





*Build  
Trust  
& Have  
Fun!*





# Questions?

## Contact:

**Sarah Whitney, RLA, CESL**  
Urban Waters & Wildlife Program Manager  
Long Tom Watershed Council  
[urbanwaters@longtom.org](mailto:urbanwaters@longtom.org)

**Sydney Nilan**  
Network Director  
Upper Willamette Stewardship Network  
[sydney@upperwillamette.org](mailto:sydney@upperwillamette.org)

**Kirk Shimeall**  
Executive Director and Fiscal Sponsorship & Stewardship Coordinator  
Cascade Pacific Resource Conservation & Development  
[kirk@cascadepacific.org](mailto:kirk@cascadepacific.org)