

WRF-MMIF-AERMET Model Performance Evaluation in support of a PSD permit application

Jay
McAlpine
EPA R10



Content used with permission from High
Test Sands and



Ranil
Dhammapala
WA Dept of
Ecology



EPA Region 10 Technical Support



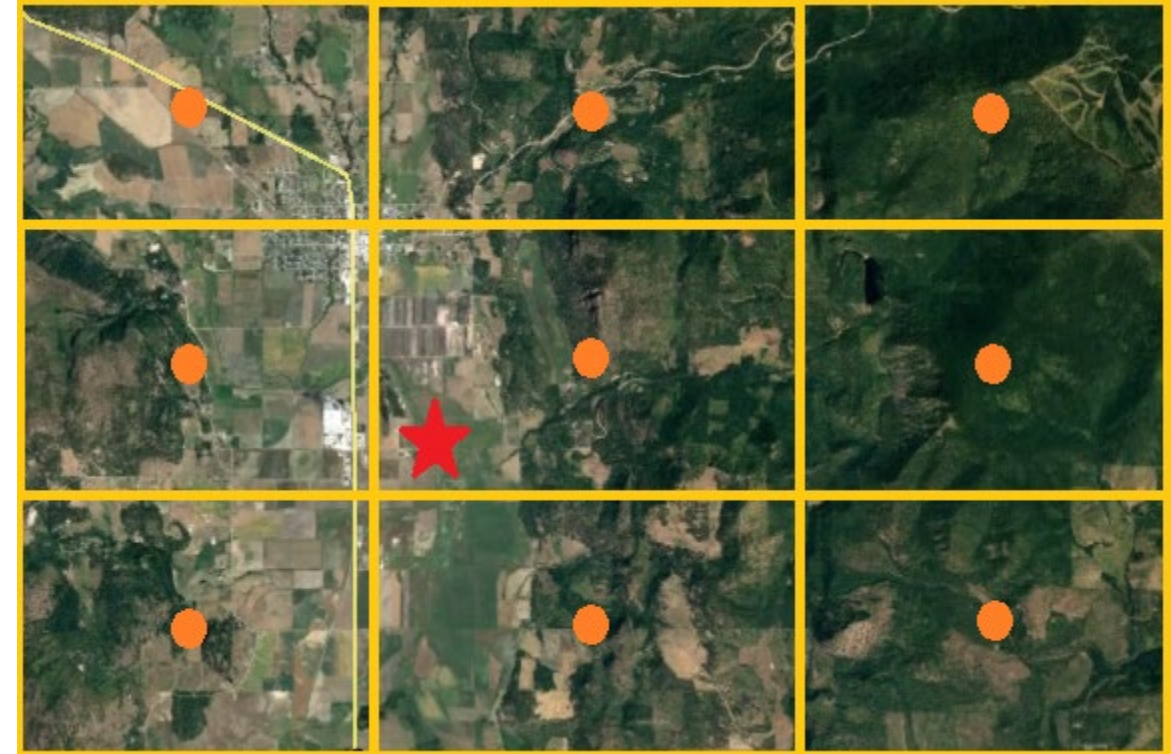
Does the State need to provide a formal determination that it is cost prohibitive or infeasible to collect adequately representative site-specific meteorological data?

EPA Region 10 Technical Support

Recommendation:

Perform a qualitative theoretical evaluation of model performance at the project source site

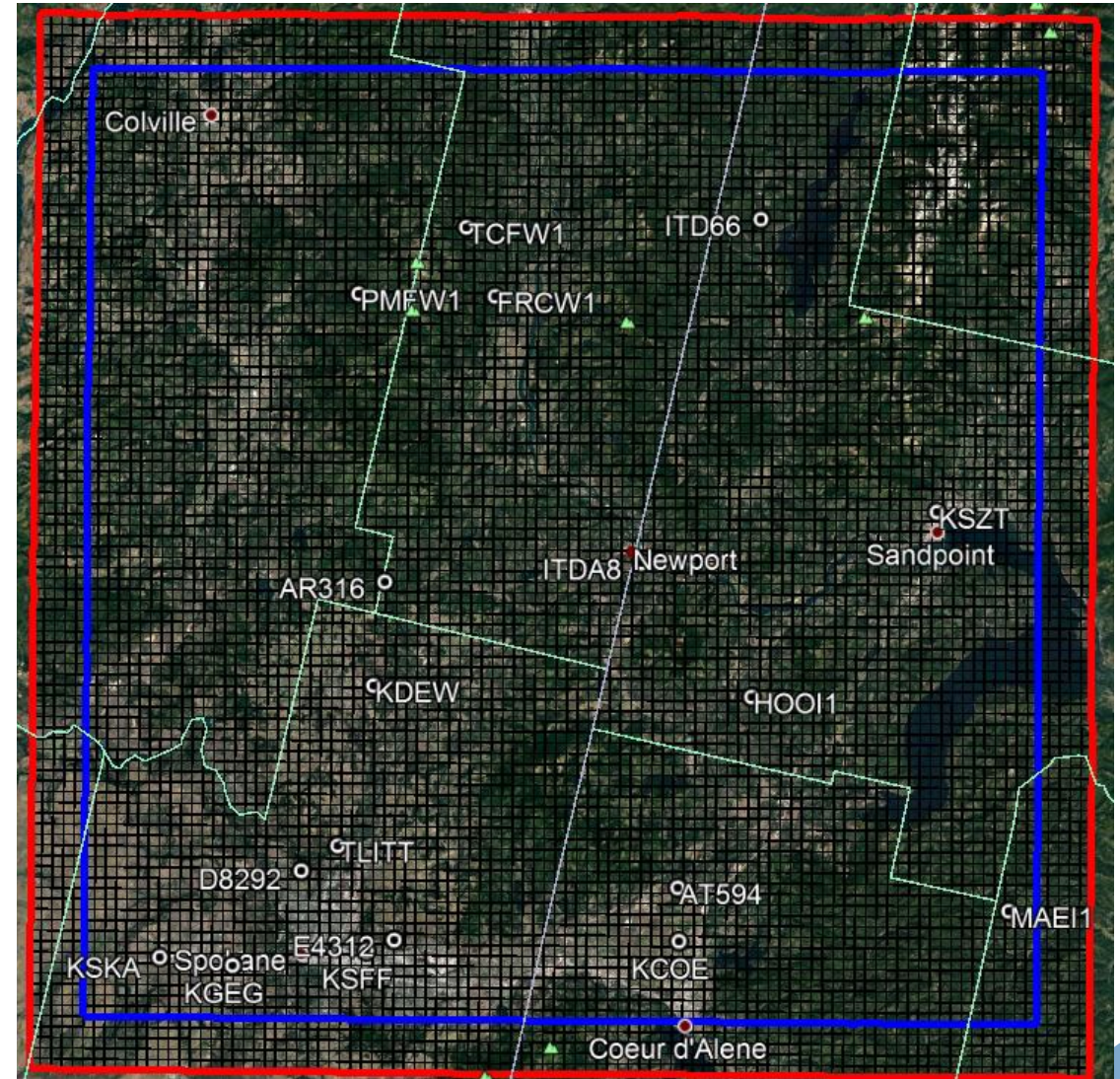
- Wind rose at selected point vs terrain and land-use
- Evaluation of land-use parameters:
WRF, AERSURFACE, Observed (visual)
- Determination of representative cell



EPA Region 10 Technical Support

How many sites?

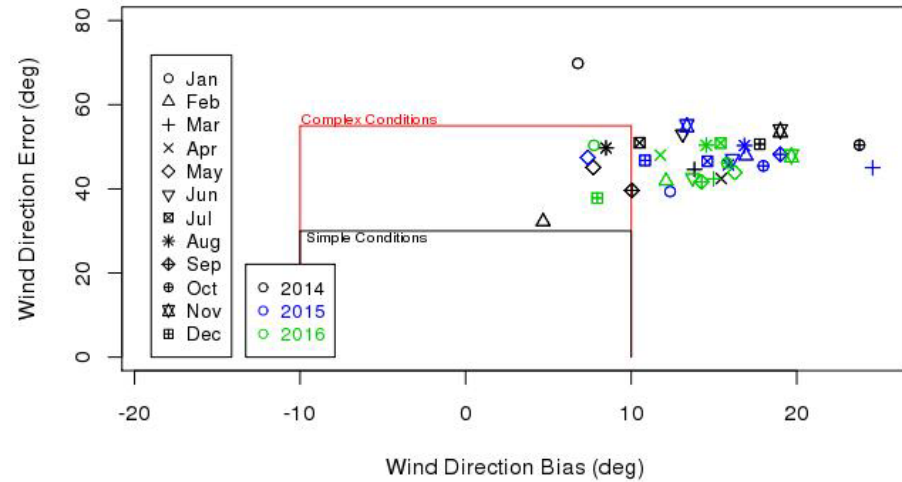
How good of performance?



EPA Region 10 Technical Support

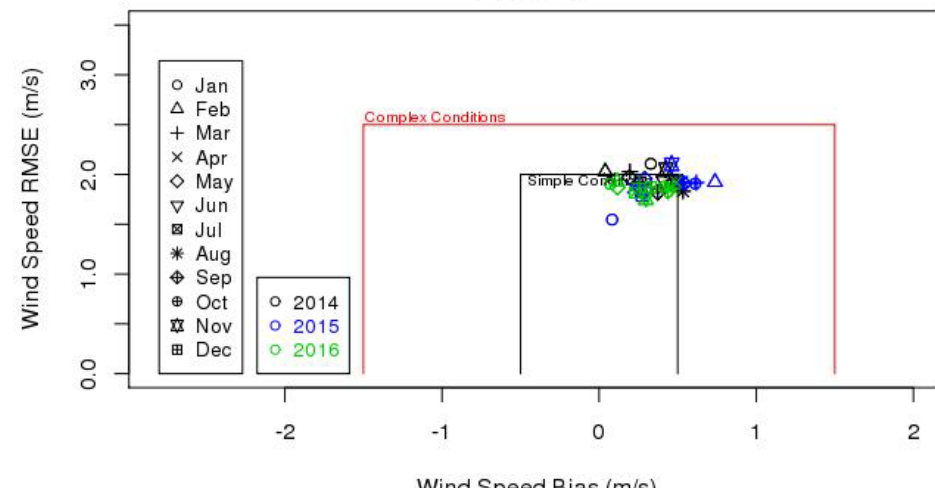
PacWest Newport WRF d04 Wind Direction Performance

FINAL - all



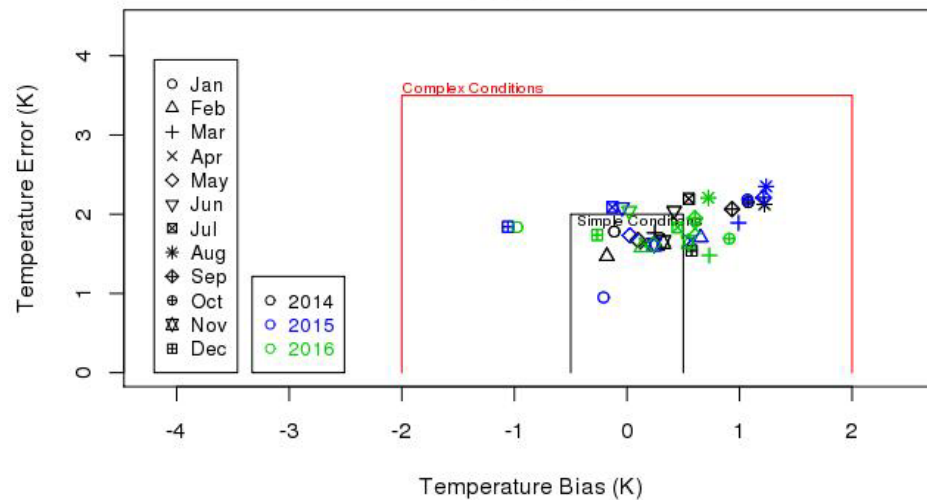
PacWest Newport WRF d04 Wind Speed Performance

FINAL - all



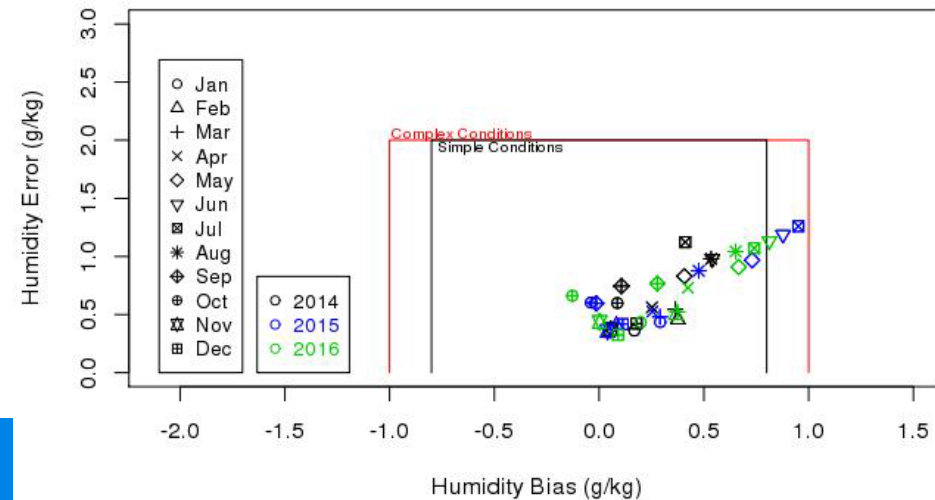
PacWest Newport WRF d04 Temperature Performance

FINAL - all



PacWest Newport WRF d04 Humidity Performance

FINAL - all





Q&A

Jay McAlpine, PhD
Meteorologist, Regional Modeling Contact
206.553.0094
McAlpine.Jay@epa.gov

Ranil Dhammapala, PhD
Atmospheric Scientist
360-407-6807
ranil.dhammapala@ecy.wa.gov

